

New Forms of *Coptolabrus* (Coleoptera, Carabidae)
from Formosa and Korea

By

Yoshihiko KUROSAWA

Department of Zoology, National Science Museum, Tokyo

and

Yoshiro KUDO

Department of Hygiene, St. Marianna University School of Medicine, Kawasaki

Local variations are frequently observed in the species of the carabid subgenus *Coptolabrus* MORAWITZ, 1886, occurring in the Chinese Continent. Two new forms described in the following lines are the examples of such a case in Formosa and Korea.

Before going further, the authors wish to express their sincere gratitude to Mr. Toyochi SHIMONOYA of Fukui City for his kind loan of material for this study and to Mr. Hirotaka MATSUKA for taking photographs.

Damaster (Coptolabrus) nankotaizanus shimonoyai subsp. nov.

Differs from the other races of *Damaster (Coptolabrus) nankotaizanus* KANO, 1932, in the following points: Sides of pronotum strongly and arcuately swollen in the anterior half and strongly sinuate and convergent in the posterior half; marginal coppery colour entire, reaching the apices, extending interiorly along the entire length of the base and joining each other.

Length: 39–47 mm (without mandibles).

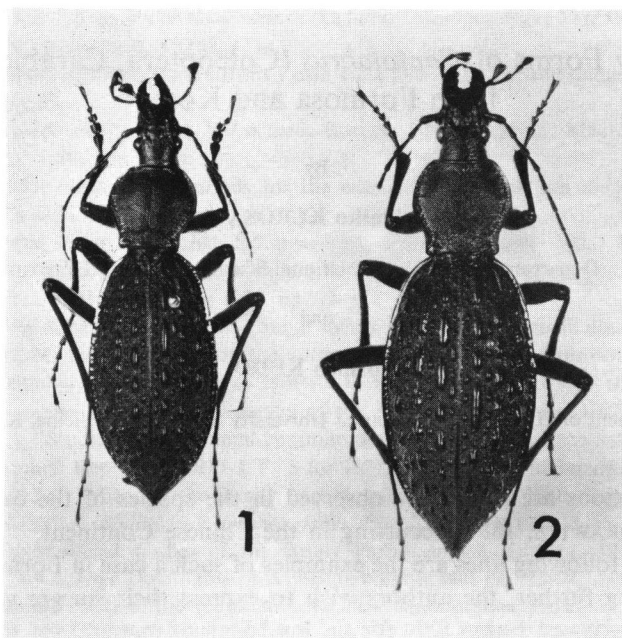
Holotype: ♂, Mt. Lala-shan, N. Formosa, 10. vii. 1974. Allotype: ♀, Mt. Lala-shan, N. Formosa, 30. iii. 1934, ARITA lgt. (T. Kano Collection of the National Science Museum, Tokyo). Paratypes: 1 ♂, 1 ♀, Mt. Lala-shan, N. Formosa, 10–11. vii. 1975.

The holotype and allotype are preserved in the collection of the National Science Museum, Tokyo. The paratypes are preserved in the collection of Mr. Toyochi SHIMONOYA of Fukui City.

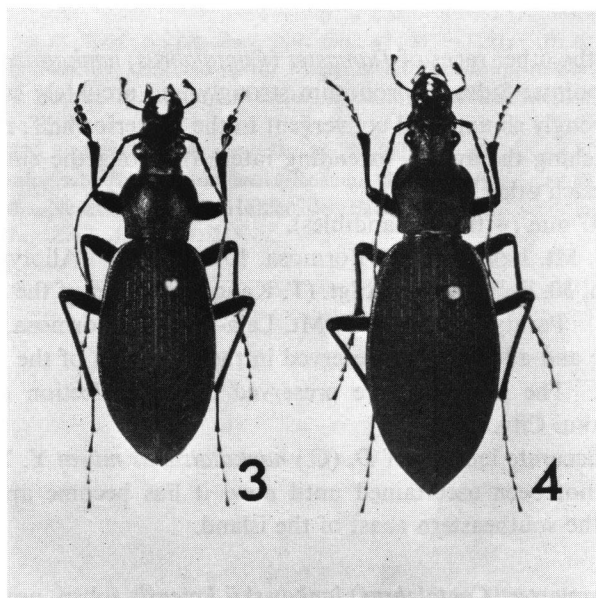
Though the accurate locality of *D. (C.) nankotaizanus miwai* Y. KUROSAWA, 1959 in Formosa has not been ascertained until now, it has become apparent that it is Chihpen Spa on the southeastern coast of the island.

Damaster (Coptolabrus) jankowskii kojensis subsp. nov.

Solely different from the typical *jankowskii* in the coloration: Head and pronotum



Figs. 1-2. *Damaster (Coptolabrus) nankotaizanus shimonoyai* Y. KUROSAWA et KUDO, subsp., nov. from Formosa. — 1. Holotype ♂. — 2. Allotype ♀.



Figs. 3-4. *Damaster (Coptolabrus) jankowskii kojensis* Y. KUROSAWA et KUDO, subsp. nov., from Korea. — 3. Holotype ♂. — 4. Allotype ♀.

dark bluish, violaceous blue or dark violaceous; elytra black, mat, narrowly margined with purple which extends from shoulder to near the apical fifth and then disappears; body beneath and legs black.

Length: 26–34 mm (without mandibles).

Holotype: ♂, Koje-do Is., S. Korea, 18. vii. 1970. Allotype: ♀, Koje-do Is., 18. vii. 1970. Paratypes: 56 ♂♂, 51 ♀♀, Koje-do Is., S. Korea, 12–20. vii. 1970.

The holotype, allotype, and ten pair of the paratypes are preserved in the collection of the National Science Museum, Tokyo, and the remaining paratypes are preserved in that of Y. KUDO.

The materials from Nan-hae Is., S. Korea, are closely similar to this new race. However, the pronotum is brighter and more strongly tinged with violaceous, and the marginal purple of elytra is brighter. Though they are brighter and more beautiful than the specimens from Koje-do Is., they may be included in the same taxon.

