

A Record on the Botanical Expedition to China in 1995¹

By

**Fumihiro KONTA², Yoshimichi DOI², Taiju KITAYAMA²,
Zhi-Guang QIAN³, Mu ZANG⁴ and Jin-Xin HAN³**

²Department of Botany, National Science Museum,
4-1-1 Amakubo, Tsukuba City, Ibaraki, 305 Japan

³Shanghai Museum of Natural History,
260 East Yan-an Road, Shanghai 200002, China

⁴Cryptogamic Herbarium, Kunming Institute of Botany,
Academia Sinica, Heilongtan, Kunming 650204, China

A new research on Chinese flora under the title of “Comparative floristic studies between Japan and SE. Asia” started at April in 1995 under the leadership of Dr. Hiroshige KOYAMA, Director of the Department of Botany, National Science Museum, Tokyo, Japan. This research was planned as a cooperative study between the National Science Museum, Tokyo, and the Shanghai Museum of Natural History and is continued for two years. The research is partly supported by the Kunming Institute of Botany, Academia Sinica in China. We researched flora of vascular plants, lichens and fungi in the mountain areas and flora of brown algae and fauna of mollusks in the sea area. Localities and itinerary of four field trips are recorded in this paper. These field trips were done as follows: 1) Mts. Ailaoshan and Mt. Wuliangshan, Yunnan Prov., from 8 to 22 March, a field work of the former project (DOI *et al.* 1995); 2) Zhoushan Islands, Zhejiang Prov., from 8 to 22 June; 3) Mts. Jiuliangshan, Mts. Jingtangshan and Mts. Jiulianshan, Jiangxi Prov., from 1 to 31 July; 4) Mt. Fanjinshan, Guizhou Prov., Mt. Laojunshan and Mt. Dawuishan, Yunnan Prov., from 15 September to 16 October (Fig. 1).

Following members took part in the joint field researches.

Japanese side:

Hiroshige KOYAMA, Director, Department of Botany, National Science Museum, Tokyo (spermatophytes).

Yoshimichi DOI, Curator, ditto (fungi).

Fumihiro KONTA, Curator, ditto (spermatophytes).

Hiroyuki KASHIWADANI, Curator, ditto (lichens).

Taiju KITAYAMA, Curator, ditto (algae).

¹ This study was supported by Grant-in Aid for Scientific Research, Ministry of Education, Science, Sports and Culture, Japan (Field Research no. 07041151).



Fig. 1. Map showing collecting sites in China.

Hiroshi SAITO, Curator, Department of Zoology, National Science Museum, Tokyo (mollusks).

Ryoji HIRAYAMA, Curator, Tsukuba Botanical Garden, National Science Museum, Tokyo (soil science).

Sadamu MATSUMOTO, Curator, ditto (pteridophytes).

Hiroshi TAKAHASHI, Professor, Gifu University, (spermatophytes).

Chinese side:

Zhongling LIU, Head of Scientific Programming Office and Curator, Shanghai Museum of Natural History, (bryophytes).

Zhi-Guang QIAN, Curator, ditto (lichens).

Xiang-kun QIN, Curator, ditto (spermatophytes).

Jin-hui GU, Curator, ditto (pteridophytes).

Si-jin HAO, Curator, ditto (spermatophytes).

Jin-xin HAN, Curator, ditto (algae).

Hui-ping DAI, Curator, ditto (algae).

Meng-cheng Ji, Lecturer, Jiangxi Agricultural University, (bryophytes).

Xin-wen MA, Senior Engineer, ditto.

Len-ling LIU, Researcher, Mts. Jingganshan Nature Reserve Station (vascular plants).

Yegin YANG, Director, the Management of Fanjing Mountain National Nature Reserve (forest ecology).

Mu ZANG, Professor, Kunming Institute of Botany (fungi).

Pei-gui LIU, Associate Professor, Vice director, ditto (fungi).

Collection sites and itinerary in Mts. Ailaoshan and Mt. Wuliangshan in Yunnan Province

- 9 March. From Kunming City to Dali City (昆明市~大理市). (1) Chuxiong State: The suburbs of Chuxiong City, ca. 1800 m alt. (楚雄州: 楚雄市郊外). (2) Dali State, Xiangyun County: Pu-peng, ca. 2300 m alt. (大理州祥雲縣: 普棚).
- 10 March. (1) Dali State: The south suburbs of Dali City, ca. 2200 m alt. (大理州: 大理市南郊外). (2) Dali State, Nanjie Yi Tribe's Autonomous County: The suburbs Nanjie Xianchen, ca. 1500 m alt. (大理州南澗彝族自治州: 南澗城郊外). (3) Dali State, Nanjie Yi Tribe's Autonomous County: Nanjie Xiachen, ca. 1300 m alt. (大理州南澗彝族自治州: 南澗城). (4) Dali State, Nanjie Yi Tribe's Autonomous County: Vicinity of Decheng, ca. 1200–1600 m alt. (大理州南澗彝族自治州: 得勝附近).
- 11–12 March. Simao Region, Jingdon Yi Tribe's Autonomous County: Xujiaba, in the Mts. Ailaoshan Nature Reserve in Mts. Ailaoshan, ca. 2300 m alt. (思茅地區, 景東彝族自治州: 哀牢山自然保護區徐家壩).
- 13 March. Simao Region, Jingdon Yi Tribe's Autonomous County (思茅地區, 景東彝族自治州): (1) Xujiaba, in the Mts. Ailaoshan Nature Reserve in Mts. Ailaoshan (哀牢山自然保護區, 哀牢山內徐家壩). (2) From Xujiaba in the Ailaoshan Nature Reserve in Mts. Ailaoshan to Jingdon Xianchen, ca. 1000–2300 m alt. (哀牢山內徐家壩~景東城).
- 14 March. Simao Region, Jingdon Yi Tribe's Autonomous County: Jinpingzhen, Huancaoling, eastern slope of Mt. Wuliangshan, ca. 2000–2300 m alt. (思茅地區, 景東彝族自治州: 錦屏鎮, 無量山內黃草嶺).
- 15 March. (1) Simao Region, Jingdon Yi Tribe's Autonomous County: Shaodaopo in Mt. Wuliangshan, ca. 2000–2200 m alt. (思茅地區, 景東彝族自治州: 無量山內小道坡). (2) Simao Region, Zhengyuan Yi, Hani and Lahu Tribe's Autonomous County: Dahetou in Mt. Wuliangshan, ca. 1800 m alt. (思茅地區, 鎮源縣: 無量山內大河頭). (3) Lincang Region, Yun County: Manwanzhen, ca. 1000 m alt. (臨滄地區, 雲縣: 漫灣鎮).
- 16 March. Simao Region, Jingdon Yi Tribe's Autonomous County (思茅地區, 景東彝族自治州): (1) Manwanzhen, Wenzucong, in Mt. Wuliangshan, ca. 1700 m alt. (無量山內漫灣鎮溫竹林). (2) Baiyanzi, ca. 2100–2400 m alt. in

Mt. Wuliangshan (無量山内白岩子). (3) Andin, a pass between Manwanzhen and Andin in Mt. Wuliangshan, ca. 2500 m alt. (安定, 無量山漫湾鎮安定間山頭道).

- 17 March. From Nidu Xianchen, Nidu County to Chuxiong City (弥渡~楚雄市). (1) Dali State, Nidu County: Nidu (大理州弥渡県: 弥渡). (2) Dali State, Xiangyun County: Pu-peng, ca. 2300 m alt. (大理州祥雲県: 普棚). (3) Chuxiong State, Nanhua Coutry: Nahua, ca. 1800 m alt. (楚雄州南華県: 南華).

Collection sites and itinerary in Zhoushan Islands, Zhejiang Province

- 8 June. From Shanghai City to Zhoushan City Region (上海市~舟山市地区).
 9 June. Zhoushan City Region: Shenjiamen, Putuo (舟山市地区: 普陀区沈家門).
 10 June. Zhoushan City Region: Dongjigang, Miaozihu Isl., Putuo (舟山市地区: 普陀区廟子湖島東極港).
 11 June. Zhoushan City Region: Yezishan, Miaozihu Isl., Putuo (舟山市地区: 普陀区廟子湖島葉子山).
 12 June. Zhoushan City Region: Dongjigang, Miaozihu Isl., Putuo (舟山市地区: 普陀区廟子湖島東極港).
 13 June. Zhoushan City Region: Shenjiamen, Putuo (舟山市地区: 普陀区沈家門).
 14 June. Zhoushan City Region (舟山市地区): (1) Nansha, Zhujiajian Isl., Putuo (普陀区朱家尖島南沙). (2) Wushitan, Zhujiajian Isl., Putuo (普陀区朱家尖島烏子塘).
 15 June. Zhoushan City Region: MaoTiao, Zizhulin, Putuoshen (舟山市地区: 普陀山紫竹林猫跳).
 16 June. Zhoushan City Region, Chengsi County: Xiangziao, Chengshan Isl. (舟山市地区, 嵎泗県: 嵎山島箱子凹).
 17 June. Zhoushan City Region, Chengsi County: Maoyangzhi, Goji Isl. (舟山市地区, 嵎泗県: 枸杞島毛洋嘴).
 18 June. Zhoushan City Region, Chengsi County (舟山市地区: 嵎泗県): (1) Xiangziao, Chengshan Isl. (嵎山島箱子凹). (2) Chengsi Isl. (嵎泗島).
 19 June. From Chengsi Isl. to Shanghai City Region (嵎泗島~上海市).

Collection sites and itinerary in the three mountainous regions in Jiangxi Province

- 3 July. From Nanchang City to Mts. Jiulingshan (南昌市~九嶷山). Yichun Region, Yifeng County: Donghe Station of Guanshan Nature Reserve, Lijiawuchang, Foot of Mt. Huanganshan (1481 m alt.) in the Guanshan Nature Reserve in Mts. Jiulingshan (宜春地区, 宜豊県: 九嶷山内官山自然保護区李家屋場東河站, 黄崗山山麓). ca. 450 m alt.

- 4 July. Yichun Region, Yifeng County: Botanical Specimens Garden at Donghe Station of Guanshan Nature Reserve, Lijiawuchang, Guanshan Nature Reserve in Mts. Jiulingshan, ca. 400–450 m alt. (宜春地区, 宜丰县: 九岭山内官山自然保护区李家屋场东河站植物标本园).
- 5 July. Yichun Region, Yifeng County: En route from Lijiawuchang to Shihuajian, the Guanshan Nature Reserve in Mts. Jiulingshan, ca. 450–1200 m alt. (宜春地区, 宜丰县: 九岭山内官山自然保护区李家屋场~石花尖).
- 6 July. Yichun Region, Yifeng County: Longken, the Guanshan Nature Reserve in Mts. Jiulingshan, 450–550 alt. (宜春地区, 宜丰县: 九岭山内官山自然保护区龙坑).
- 7 July. Yichun Region, Yifeng County: En route from Mazhishango to Jigongwo, the Guanshan Nature Reserve in Mts. Jiulingshan, ca. 320–360 alt. (宜春地区, 宜丰县: 九岭山内官山自然保护区麻子山沟~鳩公窟).
- 8–9 July. Yichun Region, Yifeng County: Dashiken, the Guanshan Nature Reserve in Mts. Jiulingshan, ca. 460–550 m alt. (宜春地区, 宜丰县: 九岭山内官山自然保护区大西坑).
- 10 July. From the Guanshan Nature Reserve to Mts. Jingganshan Nature Reserve. (官山自然保护区~井冈山自然保护区).
- 11 July. Ji'an Region, Jingganshan City: Shuiko, the Jingganshan Nature Reserve in Mts. Jingganshan, 870–900 m alt. (吉安地区, 井冈山市: 井冈山内井冈山自然保护区水口).
- 12 July. Ji'an Region, Jingganshan City: Mt. Pingshuishan, the Jingganshan Nature Reserve in Mts. Jingganshan, 890–1530 m alt. (吉安地区, 井冈山市: 井冈山内井冈山自然保护区平水山).
- 13 July. Ji'an Region, Jingganshan City: Shuiko, the Jingganshan Nature Reserve in Mts. Jingganshan (吉安地区, 井冈山市: 井冈山内井冈山自然保护区水口).
- 14 July. Ji'an Region, Jingganshan City: Huanyangjie and Longtan, the Jingganshan Nature Reserve in Mts. Jingganshan, 720–1050m alt. (吉安地区, 井冈山市: 井冈山内井冈山自然保护区黄洋界和龙潭).
- 15 July. Ji'an Region, Jingganshan City: Xinzhoujie (390–430 m alt.), the Jingganshan Nature Reserve in Mts. Jingganshan. (吉安地区, 井冈山市: 井冈山内井冈山自然保护区行洲街).
- 16–17 July. Ji'an Region, Jingganshan City: Bainihu (810 m alt.), Tongmulin (710 m alt.), Tsulokeng (460 m alt.), and Mt. Jijinfeng (860–960 m alt.), the Jingganshan Nature Reserve in Mts. Jingganshan (吉安地区, 井冈山市: 井冈山内井冈山自然保护区, 白泥湖, 桐木岭, 猪罗坑, 集锦峰).
- 18 July. From the Jingganshan Nature Reserve to Jiulianshan Nature Reserve (井冈山自然保护区~九连山自然保护区).
- 19 July. Ganzhou Region, Longnan County: En route from Guken to Xiahu, the Jiulianshan Nature Reserve in Mts. Jiulianshan, 500–600 m alt. (赣州地区, 龙南县: 九连山内九连山自然保护区古坑~下湖).

- 20 July. Ganzhou Region, Longnan County: En route from Daqitian to Meihualodi, the Jiulianshan Nature Reserve in Mts. Jiulianshan, ca. 500 m alt. (贛州地区, 龍南縣: 九連山内九連山自然保護区大丘田~梅花落地).
- 21 July. Ganzhou Region, Longnan County: Mt. Huanniushi, the Jiulianshan Nature Reserve in Mts. Jiulianshan, ca. 600–1300 m alt. (贛州地区, 龍南縣: 九連山内九連山自然保護区黄牛石).
- 22 July. Ganzhou Region, Longnan County: Shanfanlo, the Jiulianshan Nature Reserve in Mts. Jiulianshan, ca. 600 m alt. (贛州地区, 龍南縣: 九連山内九連山自然保護区上飯罗).
- 23 July. Ganzhou Region, Longnan County: Guken, the Jiulianshan Nature Reserve in Mts. Jiulianshan, ca. 400 m alt. (贛州地区, 龍南縣: 九連山内九連山自然保護区古坑).
- 24 July. Ganzhou Region, Longnan County: Pingkeng, the Jiulianshan Nature Reserve in Mts. Jiulianshan, ca. 550 m alt. (贛州地区, 龍南縣: 九連山内九連山自然保護区坪坑).

Collection sites and itinerary in the three mountainous regions in Guizhou and Yunnan Province

- 19 September. Guizhou Province, Tongren Region, Unan County: Song Ping, ca. 950m alt. (貴州省, 銅仁地区, 寔安縣: 松坪).
- 20–22 September. Guizhou Province, Tongren Region, Jiankao County: Mt. Fanjinshan, the Fanjinshan Nature Reserve (Ecological station–Huishanping–Top of Mt. Fanjinshan), ca. 800–2300 m alt. (Fig. 2) (貴州省, 銅仁地区, 江口縣: 梵净山内梵净山自然保護区生態站~回香坪~山頂).
- 23 September. Guizhou Province, Tongren Region, Jiankao County: Taipingxiang, Zaibaocun, (貴州省, 銅仁地区, 江口縣: 大平鄉寨抱村).
- 24 September. Guizhou Province, Tongren Region, Yuping County: Tiangping. (貴州省, 銅仁地区, 玉屏侗族自治縣: 田坪).
- 25–26. September. Guizhou Province, Tongren Region, Qingnan Bui & Miao Tribe's Autonomous District, Longli County: Guojiao, ca. 1300 m alt. (貴州省, 黔南布依族苗族自治州, 龍理縣: 谷脚).
- 27–29 September. Guizhou Province, Anshun District, Guolin Bui & Miao Tribe's Autonomous County: The Huangguoshu Water Fall, Huangguoshuzhen. (貴州省, 安順地区, 関岭布依族苗族自治州: 黄果树瀑布, 黄果树鎮).
- 30 September. Yunnan Province, Wenshan Zhuang & Miao Tribe's Autonomous District, Wenshan County: Wenshan Xiacheng, ca. 1300 m alt. (雲南省, 文山壮族苗族自治州, 文山縣: 文山縣城).
- 1–3 October. Yunnan Province, Wenshan Zhuang & Miao Tribe's Autonomous District, Malipo County: Mt. Laojunshan, the Mt. Laojunshan Nature Reserve, Nanwenhe, ca. 1300–1450 m alt. (雲南省, 文山壮族苗族自治州, 麻栗

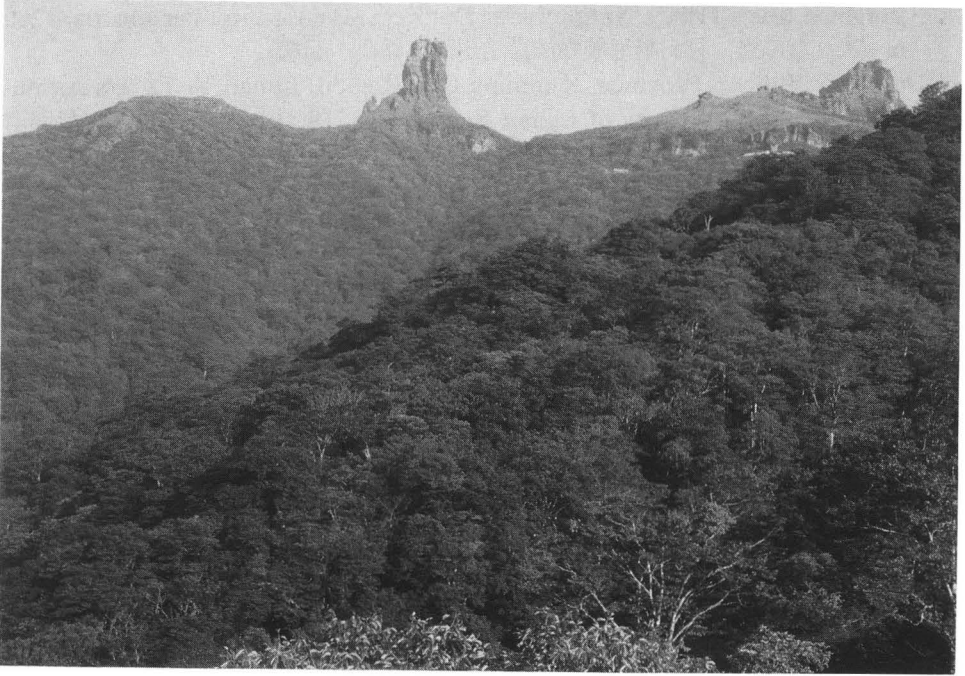


Fig. 2. Natural deciduous forest of Mt. Fanjinshan.

坡县：老君山老君山自然保护区南温河)。

- 4 October. (1) Yunnan Province, Wenshan Zhuang & Miao Tribe's Autonomous District, Wenshan County: In the south suburbs of Wenshan Xiacheng, ca. 1300 m alt. (雲南省, 文山壮族苗族自治州, 文山县: 文山县城南郊外). (2) Yunnan Province, Wenshan Zhuang & Miao Tribe's Autonomous District, Maguan County: Qiaotou, ca. 1000 m alt. (雲南省, 文山壮族苗族自治州, 馬關县: 橋頭).
- 5 October. Yunnan Province, Honghe Hani & Yi Tribe's Autonomous District, Pingbian Miao Tribe's Autonomous County: Along the road from Hekou-zhen to Pingbian Xiangcheng, ca. 250 & 1200 m alt. (雲南省, 紅河哈尼族彝族自治州, 屏边苗族自治县: 河口鎮屏边县城間沿公路边).
- 6-8 October. Yunnan Province, Honghe Hani & Yi Tribe's Autonomous District, Pingbian Miao Tribe's Autonomous County: The Mt. Daweishan Nature Reserve in Mt. Daweishan, ca. 1700-2200 m alt. (雲南省, 紅河哈尼族彝族自治州, 屏边苗族自治县: 大围山内大围山自然保护区).
- 9 October. Yunnan Province, Honghe Hani & Yi Tribe's Autonomous District, Pingbian Miao Tribe's Mengzi County: Xin'ansuo, ca. 1000 m alt. (雲南省, 紅河哈尼族彝族自治州, 蒙自县: 新安所).
- 10 October. Yunnan Province, Honghe Hani & Yi Tribe's Autonomous District,

Pingbien Miao Tribe's Autonomous District, Mile County: Pengpu, ca. 1200 m alt. (雲南省, 紅河哈尼族彝族自治州, 弥勒県: 朋普).

11 October. Yunnan Province, Kunming City Region, Lunan Yi Tribe's Autonomous County: Vicinity of Lunan Xiachen, ca. 1900 m alt. (雲南省, 昆明市地区, 路南彝族自治县: 路南县城附近).

References

- Doi, Y., F. Konta, Y. Kadota, M. Zang & Z.-L. Liu, 1995. Outline of the China-Japan Joint Researches on Plants and Fungi of China in 1993-1994, Organized mainly by National Science Museum, Tokyo. Bull. Natn. Sci. Mus., Tokyo, Ser. B, 21: 49-58.