

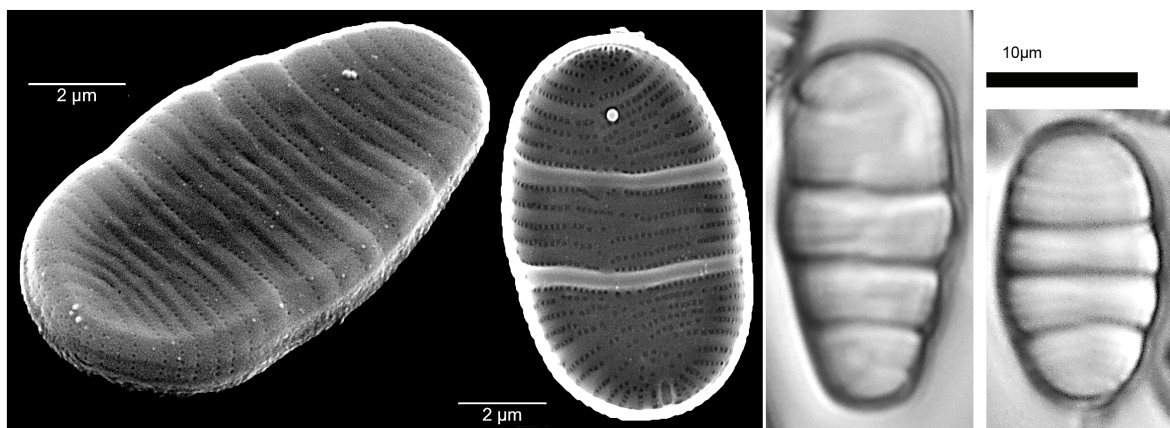
Nos. 51.

Prepared from TNS-AL-56514 in TNS.

This culture strain was prepared from TNS-AL-56465 in TNS. Lake Biwa, Shiga Pref. Coll. A. Tuji 19/iii/08.

Meridion circulare (Greville) Agardh, Consp. Crit. Diat. p. 40. 1831.

Basionym: *Echinella circularis* Greville, Scott. Crypt. Flora pl. 35. 1823.



Nos. 52.

Prepared from TNS-AL-56519 in TNS.

This culture strain was prepared from TNS-AL-56465 in TNS. Lake Biwa, Shiga Pref. Coll. A. Tuji 19/iii/08.

Melosira varians Agardh, Flora 2: 628. 1827.

