

Plate 1
In “Radiolaria. I: Messina. 1859” box

Fig. 1. Radiolarian slide with the individual of pl. 1, fig. 2.

! *Rhopalastrum truncatum*

Fig. 2 *Rhopalastrum truncatum* Haeckel 1860

From the handwriting on the slide.

Fig. 3. Radiolarian slide with the individual of pl. 1, fig. 4.

! *Rhopalastrum truncatum*

Fig. 4. *Rhopalastrum truncatum* Haeckel 1860

From the handwriting on the slide.

Fig. 5. *Coccodiscus darwinii* Haeckel 1862

From the handwriting on the slide.

Fig. 6. Radiolarian slide with the individual of pl. 1, fig. 5.

Coccodiscus darwinii

Fossil (Barbados)

Fig. 7. Radiolarian slide with the individual of pl. 1, fig. 8.

Spongosphaera streptacantha

Messina Hkl

Figs. 8a-8b. *Spongosphaera streptacantha* Haeckel 1860

From the handwriting on the slide.

Fig. 9. Radiolarian slide with the individual of pl. 1, fig. 10.

49. R.

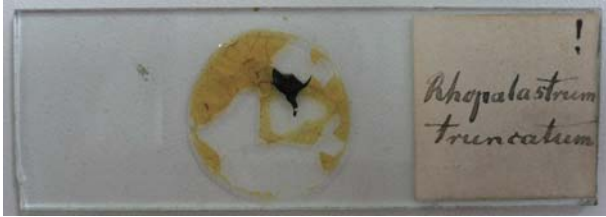
Rhopalastrum truncatum

!!

Fig. 10. *Rhopalastrum truncatum* Haeckel 1860

From the handwriting on the slide.

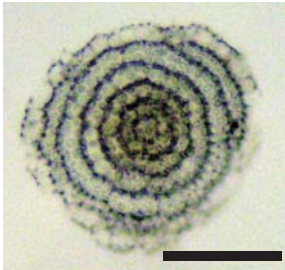
Similar to pl. 29, fig. 6 of Haeckel (1862)



1



3



2



4

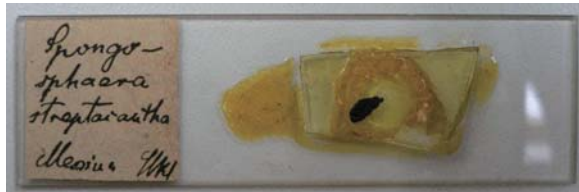
All scales: 100 μm



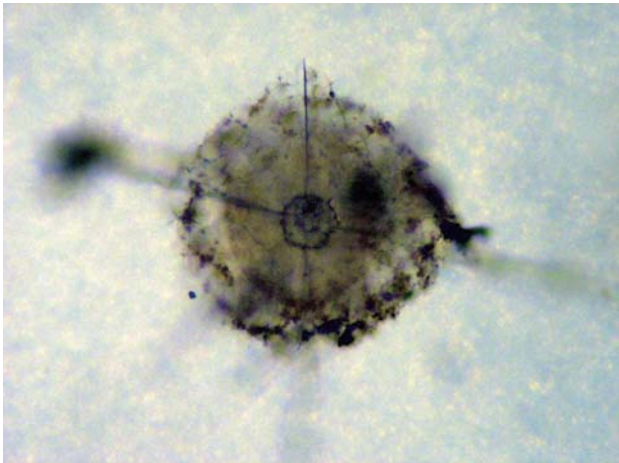
5



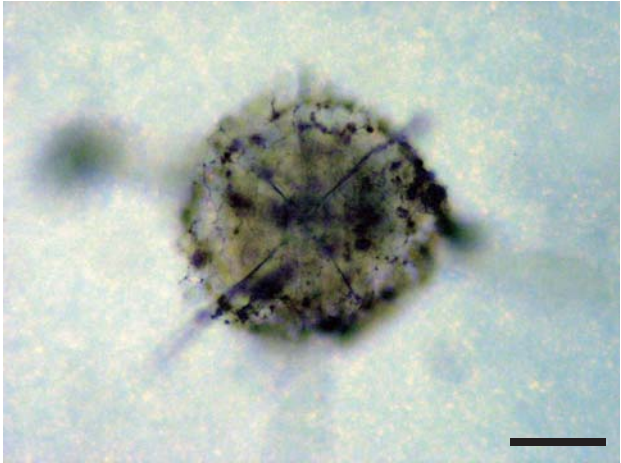
6



7



8a



8b



9



10

Plate 2
In “Radiolaria. I: Messina. 1859” box

Fig. 1. Radiolarian slide with the individual of pl. 2, figs. 2a-2b.

Haliomma capillaceum !

!

Figs. 2a-2b. *Haliomma capillaceum* Haeckel 1860

From the handwriting on the slide.

Fig. 3. Radiolarian slide with the individual of pl. 2, figs. 4a-4b.

B

Stylodictya arachnia

16 g

Figs. 4a-4b. *Stylodictya arachnia* Müller 1858b

From the handwriting on the slide.

Fig. 5. Radiolarian slide with the individual of pl. 2, figs. 6a-6b.

28. R b.

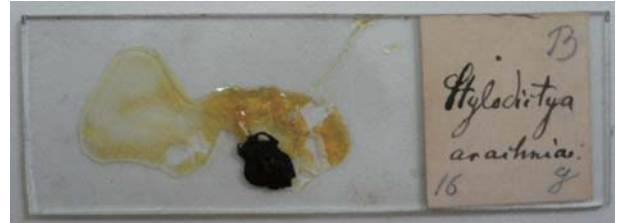
Haliomma capillaceum

Figs. 6a-6b. *Haliomma capillaceum* Haeckel 1860

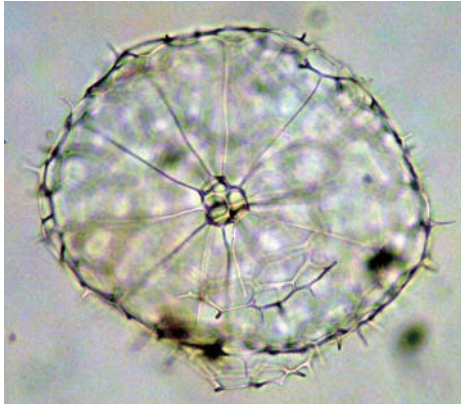
From the handwriting on the slide.



1



3



2a

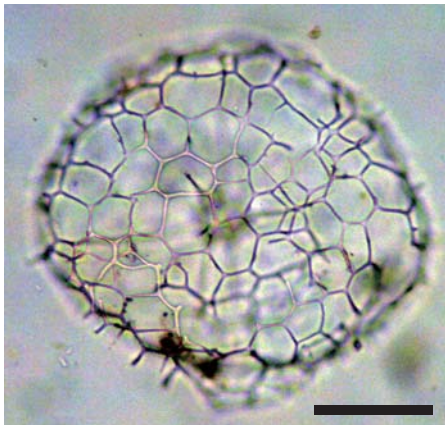


4a

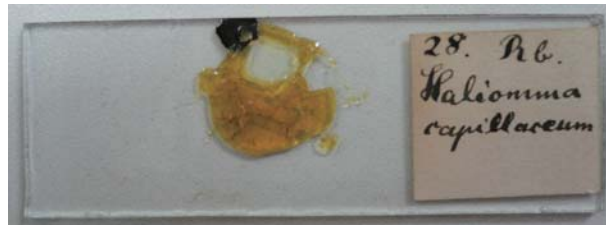


4b

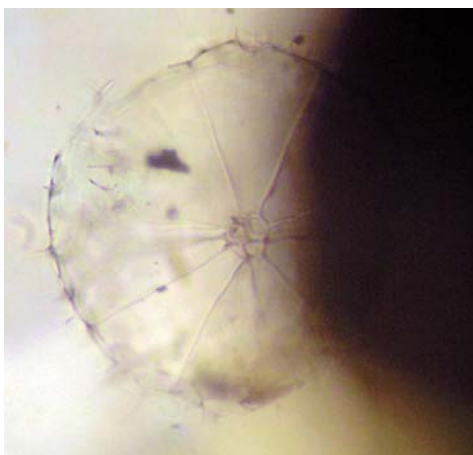
All scales: 100 μ m



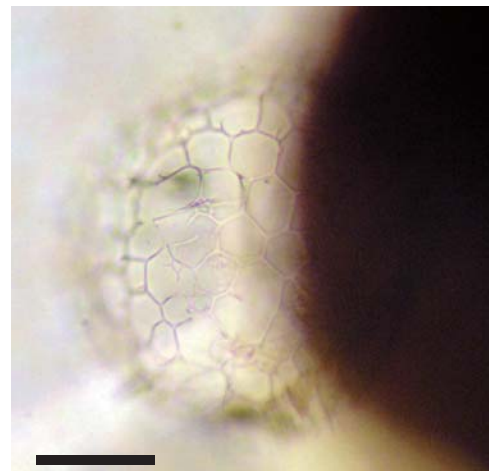
2b



5



6a



6b

Plate 3
In “Radiolaria. I: Messina. 1859” box

Fig. 1. *Collosphaera huxleyi* Müller 1858b

From the handwriting on the slide.

Fig. 2. *Collosphaera huxleyi* Müller 1858b

From the handwriting on the slide.

Fig. 3. *Collosphaera huxleyi* Müller 1858b

From the handwriting on the slide.

Fig. 4. Radiolarian slide with the individuals of pl. 3, figs. 1-3.

R. 69. !

Collosphaera huxleyi

3

Fig. 5. Radiolarian slide with the individual of pl. 3, figs. 7a-7b.

24. R.

Tetrapyle octacantha

Fig. 6. *Spongosphaera* sp.

From the handwriting on the slide.

Figs. 7a-7b. *Tetrapyle octacantha* Müller 1858

From the handwriting on the slide.

Fig. 8. Radiolarian slide with the individual of pl. 3, fig. 6.

Spongosphaera

(diruta)

Messina H.

Fig. 9. Radiolarian slide with the individual of pl. 3, figs. 10a-10b.

33. R.

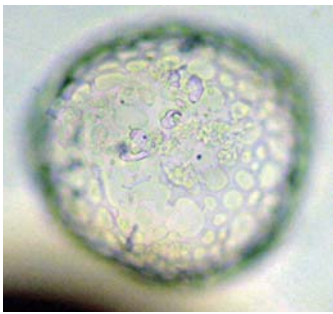
Spongosphaera streptacantha

!

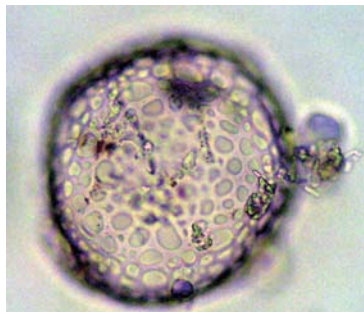
Figs. 10a-10b. *Spongosphaera streptacantha* Haeckel 1860

From the handwriting on the slide.

Plate 3



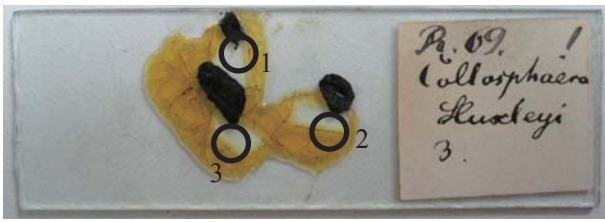
1



2



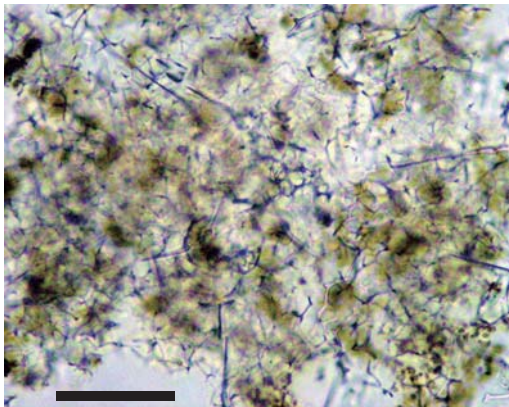
3



4



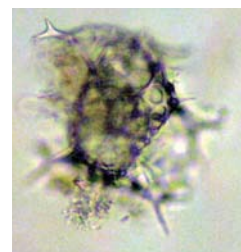
5



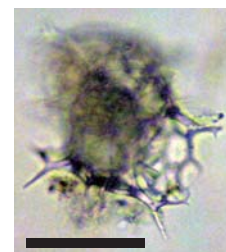
6



7a



7b



7c

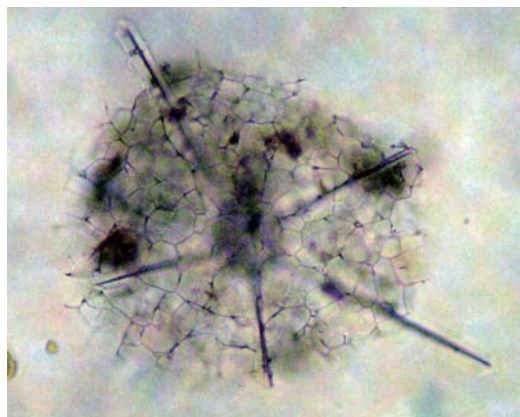
All scales: 100 μ m



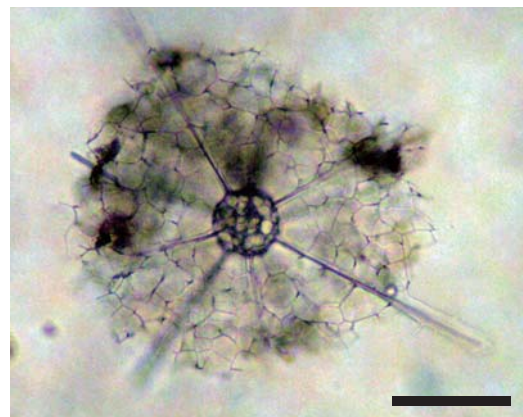
8



9



10a



10b

Plate 4
In “Radiolaria. I: Messina. 1859” box

Figs. 1a-1c. *Rhopalastrum truncatum* Haeckel 1860

From the handwriting on the slide.

Fig. 2. Radiolarian slide with the individual of pl. 4, figs. 1a-1b.

!

Rhopalastrum truncatum

(cum capsula centrali)

Fig. 3. Radiolarian slide with the individual of pl. 4, figs. 4a-4b.

Haliomma erinaceus

!

Figs. 4a-4b. *Haliomma erinaceus* Haeckel 1860

From the handwriting on the slide.

Fig. 5. *Trematodiscus* sp.

From the handwriting on the slide.

Fig. 6. Radiolarian slide with the individual of pl. 4, fig. 5.

Trematodiscus

Fossil (Barbados)

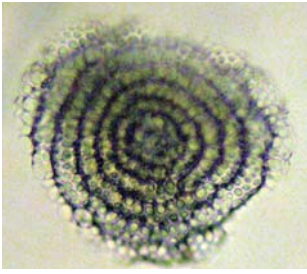
Fig. 7. Radiolarian slide with the individual of pl. 4, figs. 8a-8b.

54. R a !!

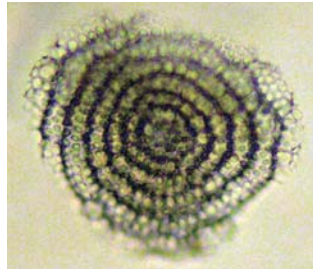
Euchitonia mülleri

Figs. 8a-8b. *Euchitonia muelleri* Haeckel

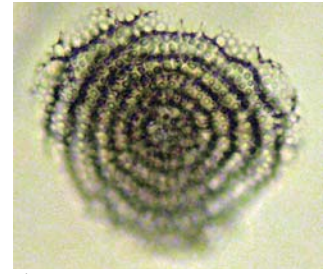
From the handwriting on the slide.



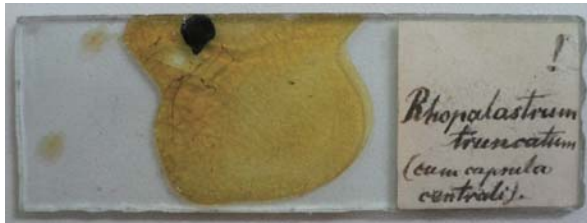
1a



1b



1c

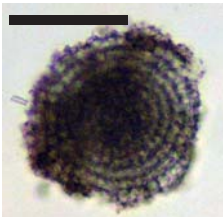


2

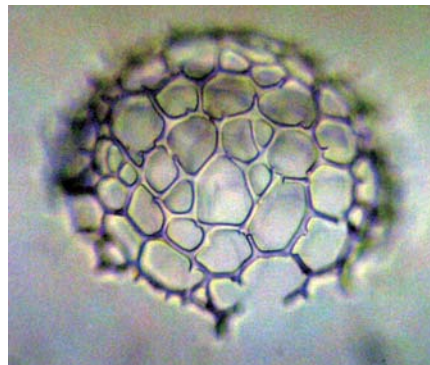


3

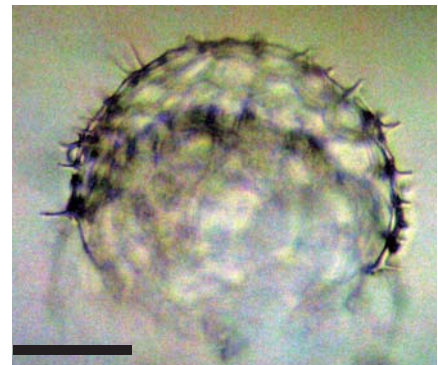
All scales: 100 μ m



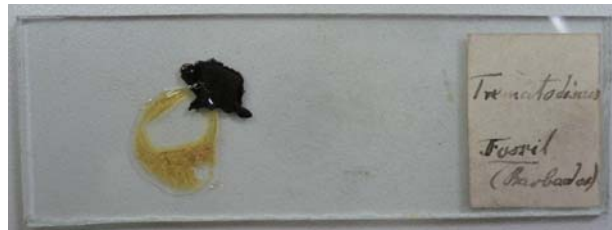
5



4a



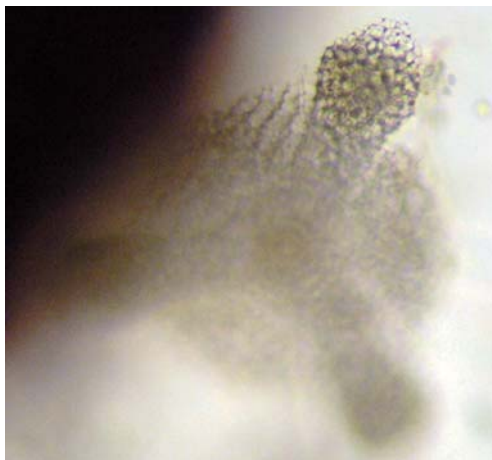
4b



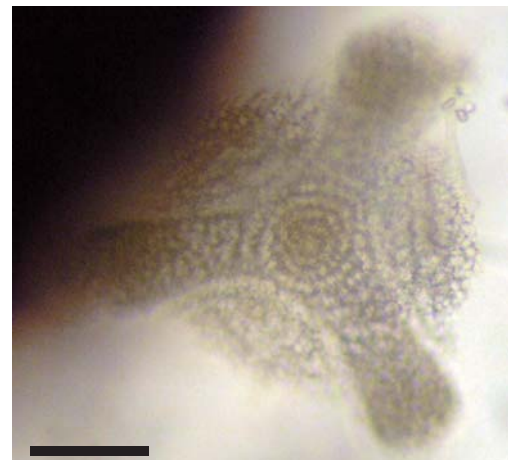
6



7



8a



8b

Plate 5
In “Radiolaria. I: Messina. 1859” box

Figs. 1a-1c. *Stylodictya arachnia* Müller 1858

From the handwriting on the slide.

Fig. 2. Radiolarian slide with the individual of pl. 5, figs. 1a-1c.

Stylodictya arachnia

Messina Hkl

Fig. 3. Radiolarian slide with the individual of pl. 5, figs. 4a-4b.

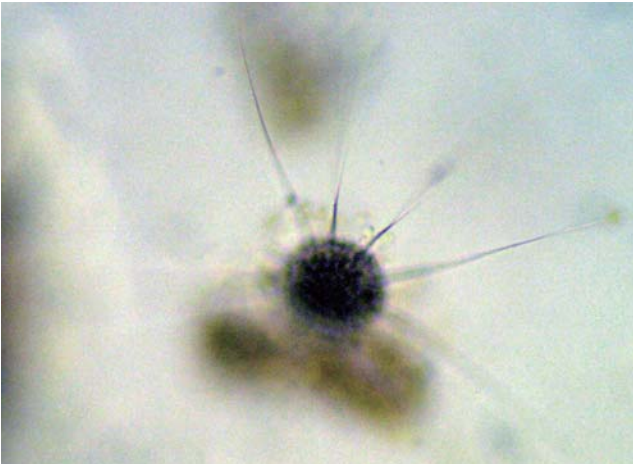
27. R. (2)

Actinomma drymodes

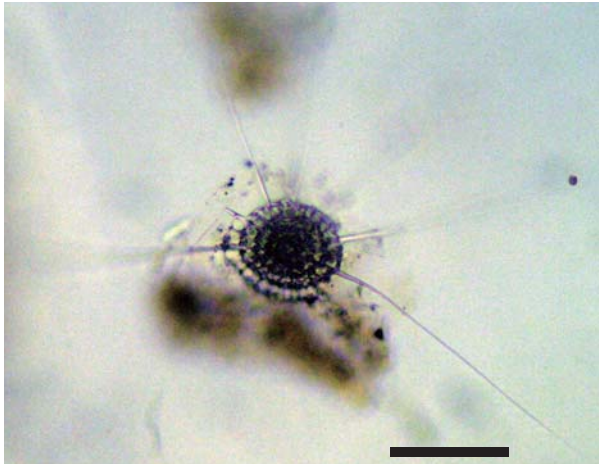
(Ma***yatam!)

Figs. 4a-4b. *Actinomma drymodes* (Haeckel 1860)

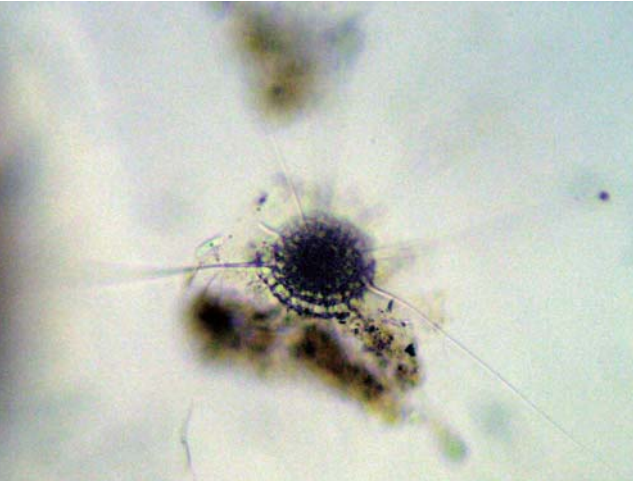
From the handwriting on the slide.



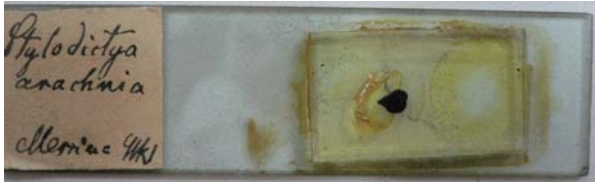
1a



1b



1c



2

All scales: 100 µm



3



4a



4b

Plate 6
In “Radiolaria. I: Messina. 1859” box

Fig. 1. *Collosphaera huxleyi* Müller 1858

From the handwriting on the slide.

Fig. 2. *Collosphaera huxleyi* Müller 1858

From the handwriting on the slide.

Fig. 3. *Collosphaera huxleyi* Müller 1858

From the handwriting on the slide.

Fig. 4. Radiolarian slide with the individuals of pl. 6, figs. 1-3.

69. R. !!

Collosphaera huxleyi

(prolifera)

Fig. 5. Radiolarian slide with the individual of pl. 6, figs. 6a-6c.

31. c R. !

Rhizosphaera trigonacantha

Figs. 6a-6c. *Rhizosphaera trigonacantha* Haeckel 1860

From the handwriting on the slide.

Fig. 7. Radiolarian slide with the individuals of pl. 6, fig. 8-9.

Radiolaria

Collosphaera

Hymeniastrum

Acanthometra

R. 100

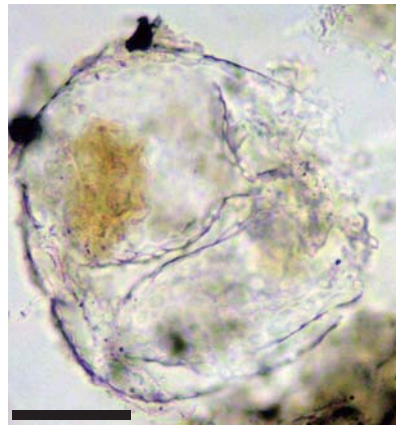
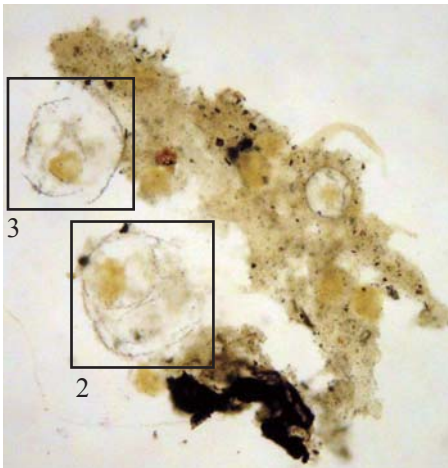
Fig. 8. *Collosphaera* sp.

From the handwriting on the slide.

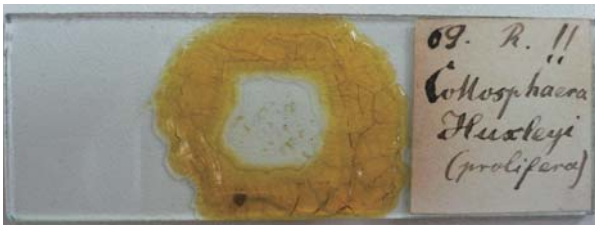
Figs. 9. *Hymeniastrum* sp.

From the handwriting on the slide.

Similar to pl. 30, fig. 8 of Haeckel (1862)



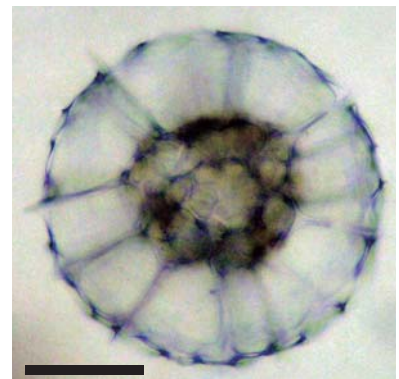
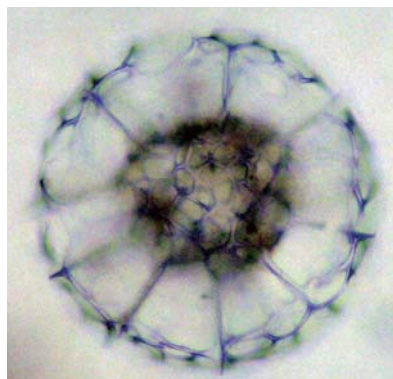
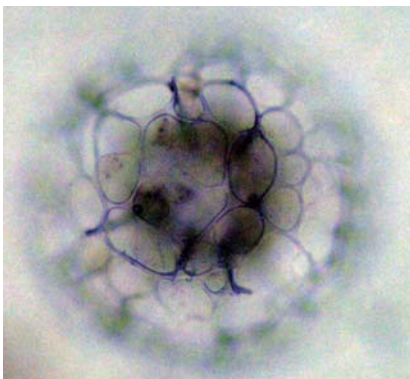
All scales: 100 μ m



69. R. !!
Collospira
Huxleyi
(*prolifera*)



31. cR. !
Rhizospira
trigonacantha



Radiolaria
Sp. ph.
Sp. ph.
Collospira
Hyman: etc.
Arachnoid
R. 100

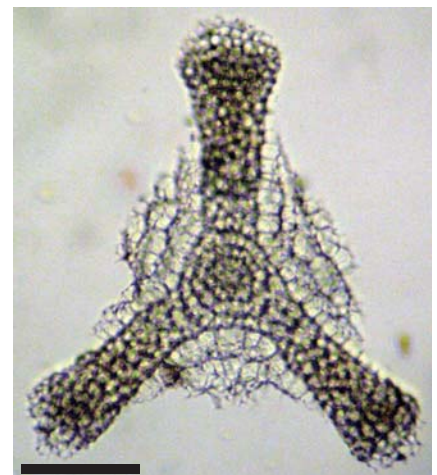
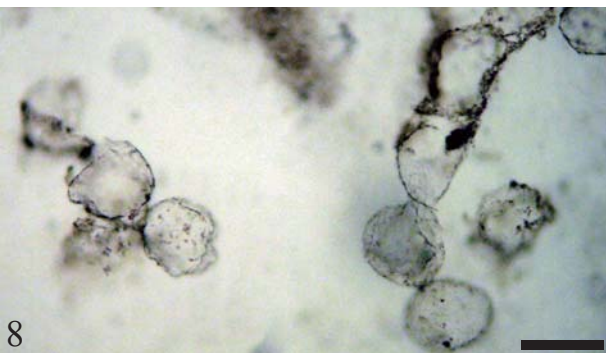


Plate 7
In “Radiolaria. I: Messina. 1859” box

Figs. 1a-1b. *Spongosphaera streptacantha* Haeckel 1860

From the handwriting on the slide.

Fig. 2. Radiolarian slide with the individual of pl. 7, figs. 1a-1b.

33. R b.

Spongosphaera streptacantha

Fig. 3. Radiolarian slide with the individual of pl. 7, figs. 1a-1b.

!

Coccodiscus darwinii

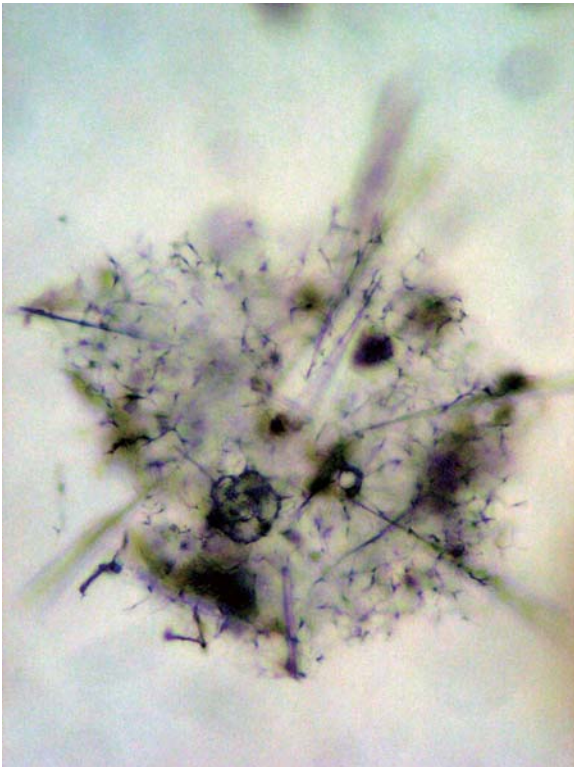
(Fossil)

Barbados

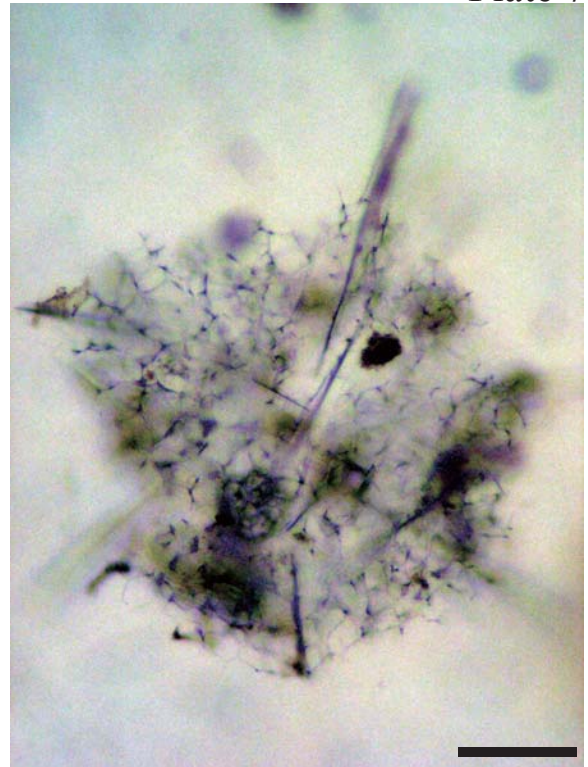
Figs. 4a-4b. *Coccodiscus darwinii* Haeckel 1862

From the handwriting on the slide.

Similar to pl. 28, fig. 11 of Haeckel (1862)



1a



1b

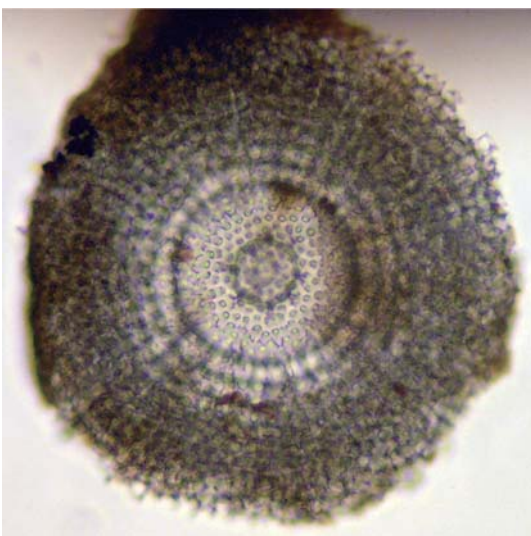


2

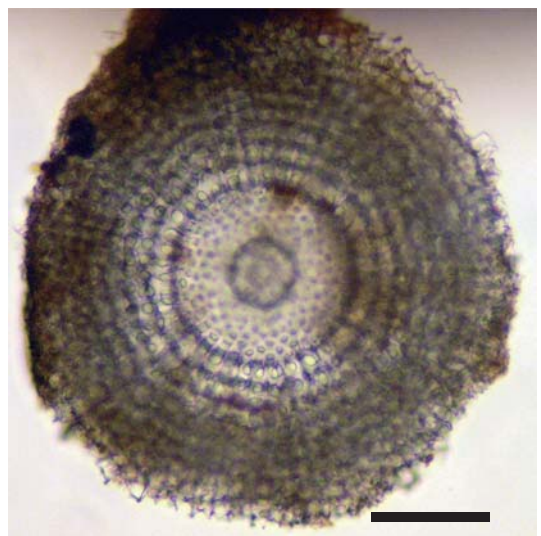


3

All scales: 100 μ m



4a



4b

Plate 8
In “Radiolaria. I: Messina. 1859” box

Figs. 1a-1b. *Collosphaera huxleyi* Müller 1858

From the handwriting on the slide.

Figs. 2a-2b. *Collosphaera huxleyi* Müller 1858

From the handwriting on the slide.

Fig. 3. Radiolarian slide with the individuals of pl. 8, figs. 1-2.

69. R. !!

Collosphaera huxleyi

(cum magnus crystallus)

Figs. 4a-4b. *Collosphaera spinosa* Haeckel 1860

From the handwriting on the slide.

Figs. 5a-5b. *Collosphaera spinosa* Haeckel 1860

From the handwriting on the slide.

Fig. 6. Radiolarian slide with the individuals of pl. 8, figs. 4-5.

70. R. * !

Collosphaera spinosa Hkl.

Messina 1860.

Fig. 7. Radiolarian slide with the individual of pl. 8, fig. 8.

R 52.

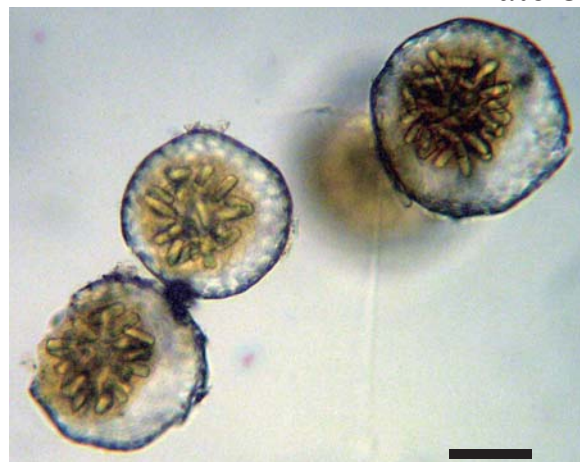
Spongosphaera streptacantha

Figs. 8a-8b. *Spongosphaera streptacantha* Haeckel 1860

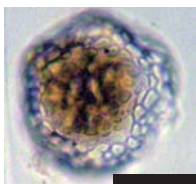
From the handwriting on the slide.



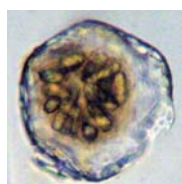
1a



1b



2a



2b



3

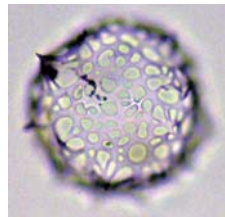
All scales: 100 µm



4a



4b



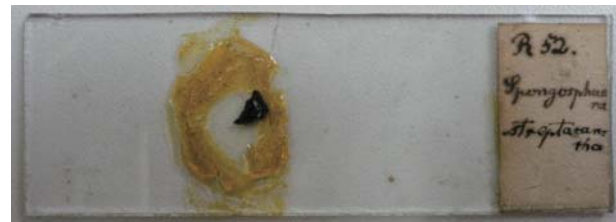
5a



5b



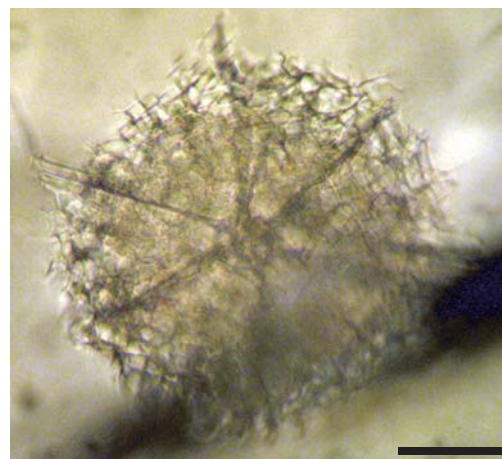
6



7



8a



8b

Plate 9
In “Radiolaria. I: Messina. 1859” box

Fig. 1. *Stylodictya arachnoides* [nomen nudum]

From the handwriting on the slide.

Fig. 2. Radiolarian slide with the individual of pl. 9, fig. 1.

Stylodictya arachnoides

!!

Messina H.

Fig. 3. *Rhopalastrum truncatum* Haeckel 1860

From the handwriting on the slide.

Fig. 4. Radiolarian slide with the individual of pl. 9, fig. 3.

49. c. R.

Rhopalastrum truncatum

(cum capsula)

(centrali)

Figs. 5a-5c. *Haliomma erinaceus* Haeckel 1860

From the handwriting on the slide.

Similar to pl. 9, fig. 3 of Haeckel (1862)

Fig. 6. Radiolarian slide with the individual of pl. 9, figs. 5a-5c.

R. 73.

Haliomma erinaceus

!

Fig. 7. Radiolarian slide with the individual of pl. 9, fig. 8.

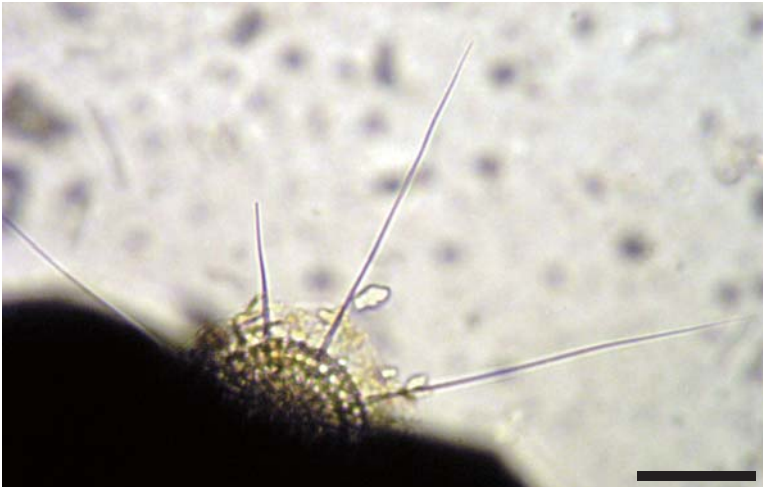
48. v. R S.

Stylodictya arachnia

8+10/R b

Fig. 8. *Stylodictya arachnia* Müller 1858

From the handwriting on the slide.

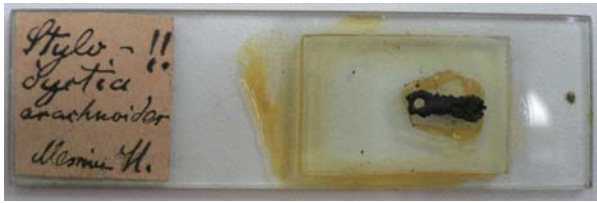


1



3

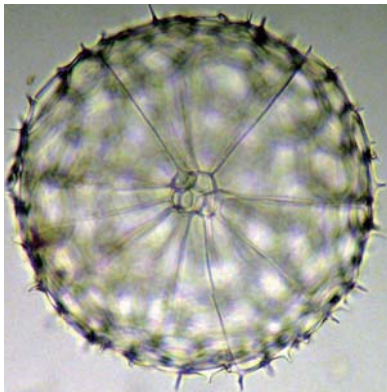
All scales: 100 μm



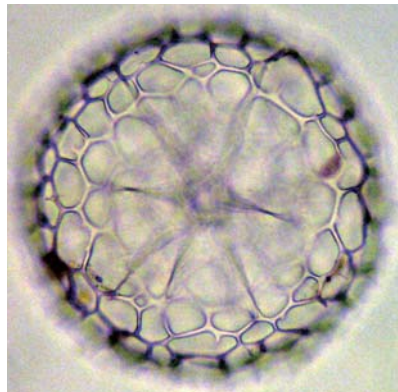
2



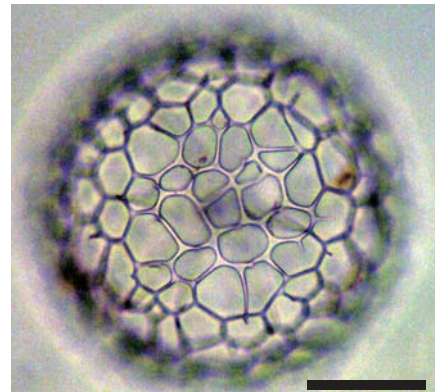
4



5a



5b



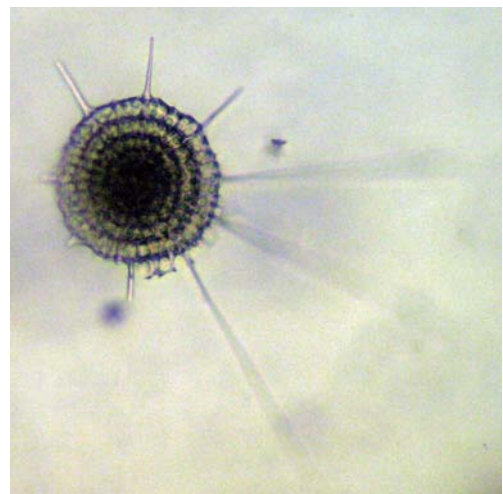
5c



6



7



8

Plate 10
In “Radiolaria. I: Messina. 1859” box

Figs. 1a-1b. *Collosphaera huxleyi* Müller 1858

From the handwriting on the slide.

Figs. 2a-2b. *Collosphaera huxleyi* Müller 1858

From the handwriting on the slide.

Fig. 3. Radiolarian slide with the individual of pl. 10, figs. 1a-2b.

69. R.

Collosphaera huxleyi

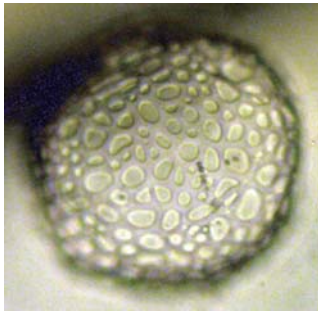
2

Figs. 4a-4b. The box of the Radiolarian slides.

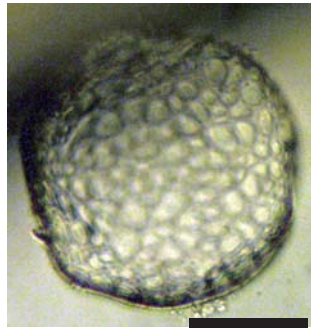
Radiolaria I.

Messina I. 1859.

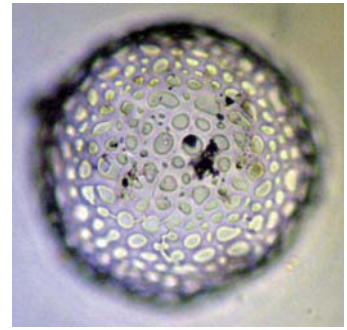
Ernst Haeckel.



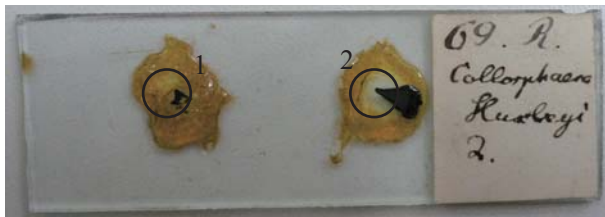
1a



1b



2a



3

All scales: 100 μ m



2b



4a



4b

Plate 11
In “Radiolaria. II: Messina. 1859” box

Figs. 1a-1b. *Stylodictya? (multispina) spongiosa?* [nomen nudum]

From the handwriting on the slide.

Fig. 2. Radiolarian slide with the individual of pl. 11, figs. 1a-1b.

47. R.

Stylodictya? (multispina) spongiosa?

Fig. 3. ***Euchitonia* sp.**

From the handwriting on the slide.

Fig. 4. Radiolarian slide with the individual of pl. 11, figs. 3.

9.8

Euchitonia

Figs. 5a-5b. *Stylodictya arachnia* Müller 1858

From the handwriting on the slide.

Fig. 6. Radiolarian slide with the individual of pl. 11, figs. 5a-5b.

48 A

Stylodictya arachnia !

(sinuosa)

Fig. 7. Radiolarian slide with the individual of pl. 11, fig. 8.

R. 51.

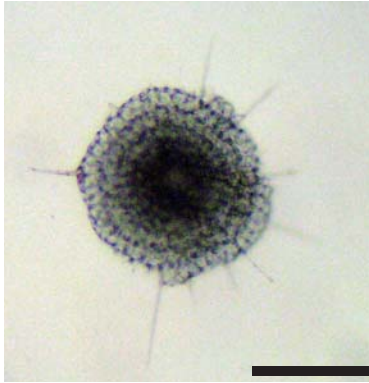
Spongosphaera streptacantha

Fig. 4. ***Spongosphaera streptacantha*** Haeckel 1860

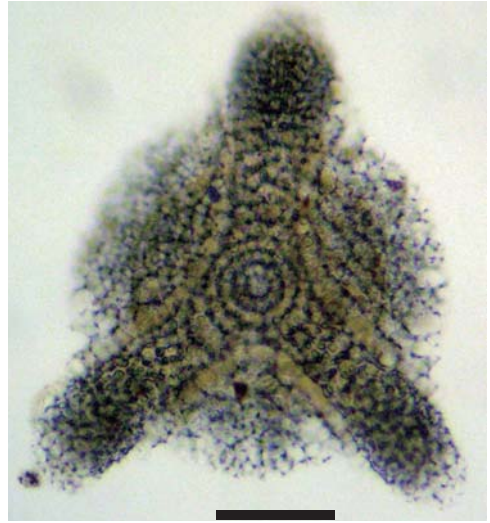
From the handwriting on the slide.



1a

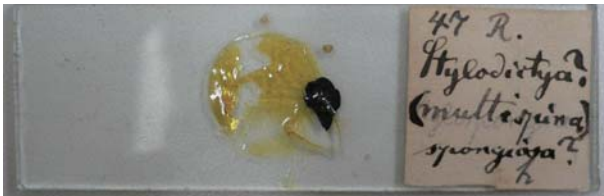


1b



3

All scales: 100 μ m



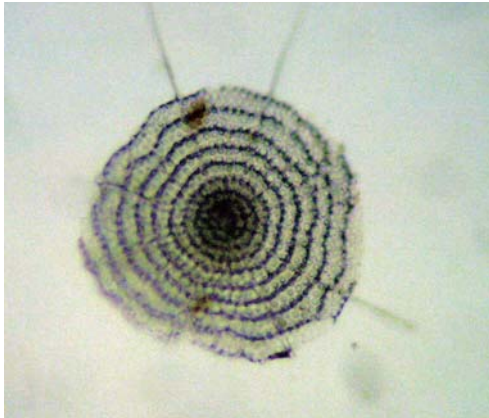
2

47 R.
Stylodictya?
(*multispina*)
spongiosa?

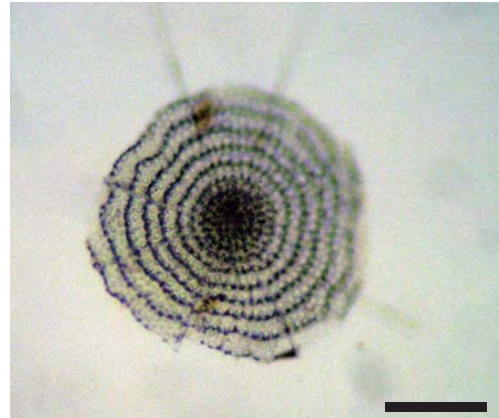


4

9.8
Euchitonia



5a



5b



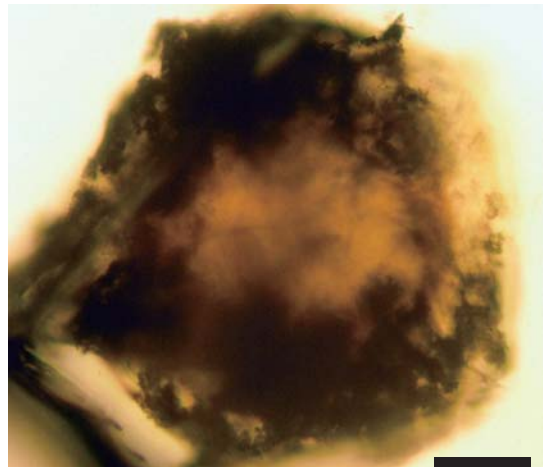
6

48 A
Stylodictya
arathnia!
(*sinuosa*)



7

R. 51.
Spongophasma
streptacantha



8

Plate 12
In “Radiolaria. II: Messina. 1859” box

Figs. 1a-1b. *Euchitonia gegenbauri* Haeckel 1862

From the handwriting on the slide.

Similar to pl. 31, fig. 2 of Haeckel (1862)

Fig. 2. Radiolarian slide with the individual of pl. 12, figs. 1a-1b.

53. R.

Euchitonia gegenbauri

!

Fig. 3. Radiolarian slide with the individuals of pl. 12, figs. 4-5.

Dyctioplegma trigonizon

Lanzarote

Aulosphaera trigonopa

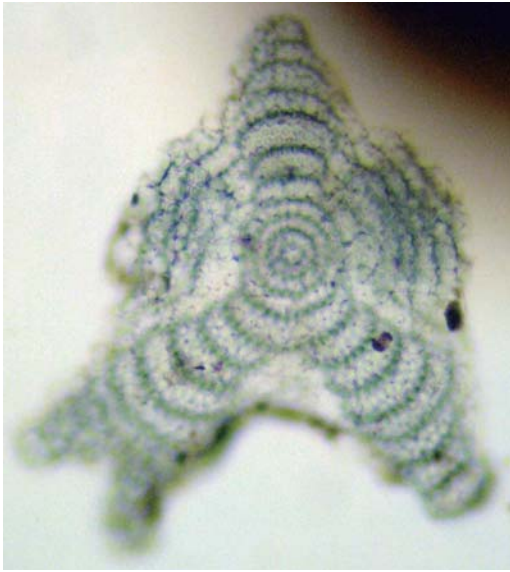
Lanzarote

Fig. 4. *Aulosphaera trigonopa* Haeckel 1860

From the handwriting on the slide.

Fig. 5. *Dyctioplegma trigonizon* [nomen nudum for genus?]

From the handwriting on the slide.

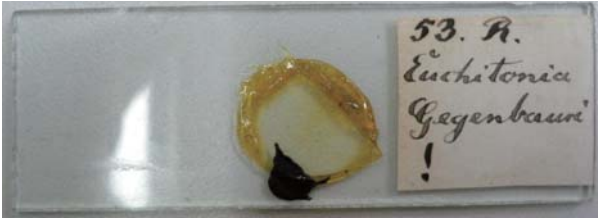


1a

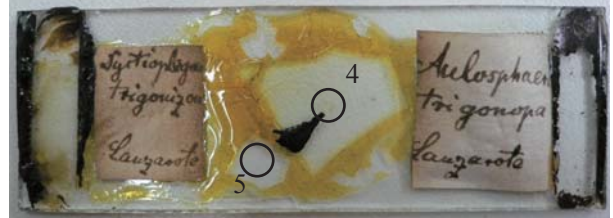


1b

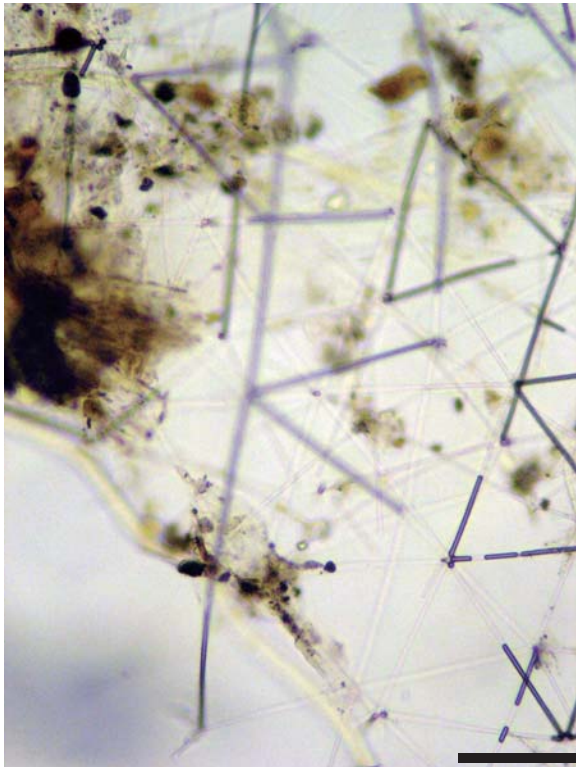
All scales: 100 μ m



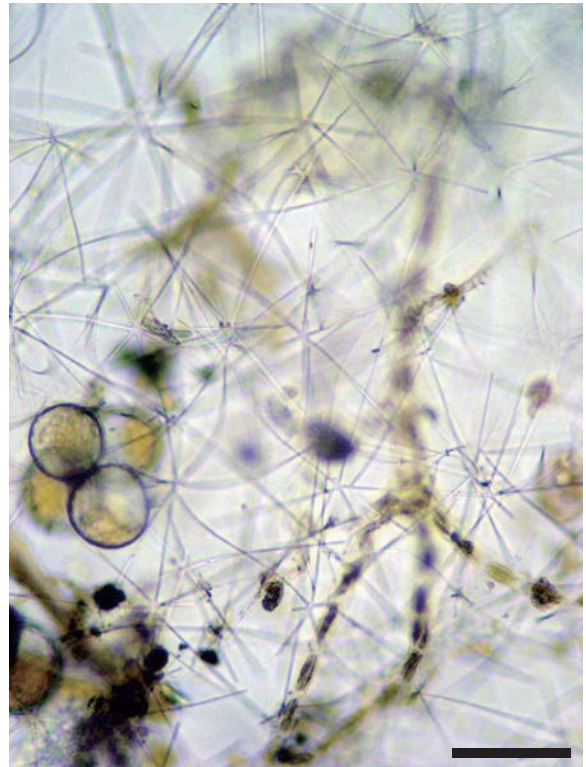
2



3



4



5

Plate 13
In “Radiolaria. II: Messina. 1859” box

Fig. 1. Radiolarian slide with the individual of pl. 13, figs. 2a-2b.

Heliodiscus

Fossil

(Mergel von Barbados)

Fig. 2. *Heliodiscus* sp.

From the handwriting on the slide.

Figs. 3a-3b. *Collosphaera huxleyi* Müller 1858

From the handwriting on the slide.

Fig. 4. Radiolarian slide with the individual of pl. 13, figs. 3a-3b.

69. R. c.

Collosphaera huxleyi

(cum capsula centrali)

Fig. 5. *Spongosphaera streptacantha* Haeckel 1860

From the handwriting on the slide.

Fig. 6. Radiolarian slide with the individual of pl. 13, fig. 5.

33. R. j. !

Spongosphaera streptacantha

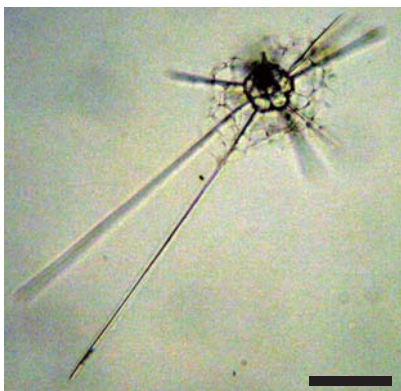
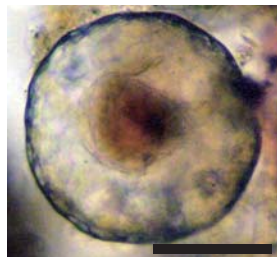
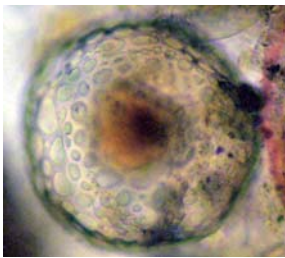
Fig. 7. Radiolarian slide with the individual of pl. 13, figs. 8a-8b.

Rhizosphaera trigonacantha

Messina

Figs. 8a-8b. *Rhizosphaera trigonacantha* Haeckel 1860

From the handwriting on the slide.



All scales:
100 µm

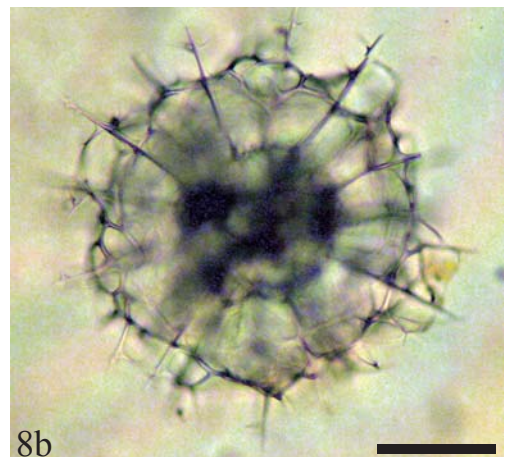
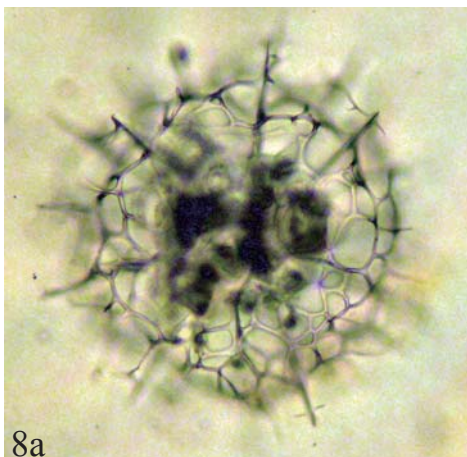
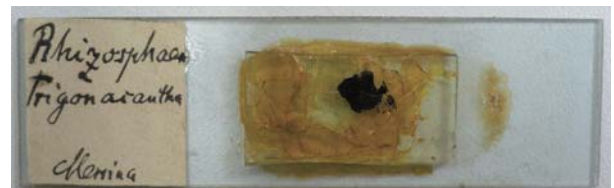


Plate 14
In “Radiolaria. II: Messina. 1859” box

Fig. 1. *Rhizosphaera trigonacantha* Haeckel 1860

From the handwriting on the slide.

Fig. 2. Radiolarian slide with the individual of pl. 14, fig. 2.

Rhizosphaera trigonacantha

(diruta)

Messina H.

Fig. 3. Radiolarian slide with the individual of pl. 14, figs. 4a-4b.

Rhizosphaera trigonacantha

!

Messina H.

Figs. 4a-4b. *Rhizosphaera trigonacantha* Haeckel 1860

From the handwriting on the slide.

Figs. 5a-5b. *Lithomelissa thoracites* Haeckel 1860

From the handwriting on the slide.

Fig. 6. Radiolarian slide with the individual of pl. 14, figs. 5a-5b.

Rhizosphaera trigonacantha

!!

Messina

Fig. 7. Radiolarian slide with the individual of pl. 14, figs. 8a-8b.

5. R.

Lithomelissa thoracites

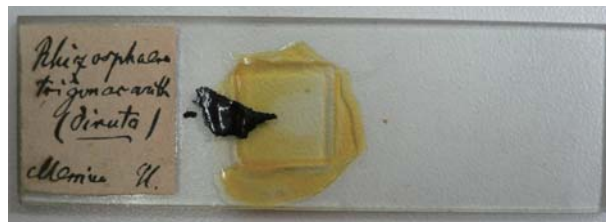
(Cyrtida)

Figs. 8a-8b. *Rhizosphaera trigonacantha* Haeckel 1860

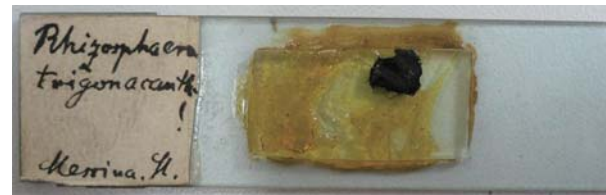
From the handwriting on the slide.



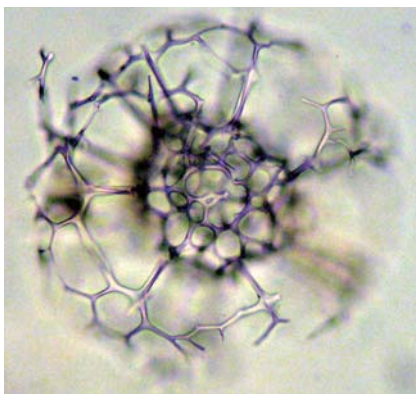
1



2



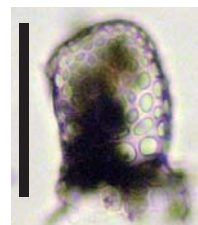
3



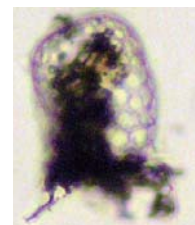
4a



4b

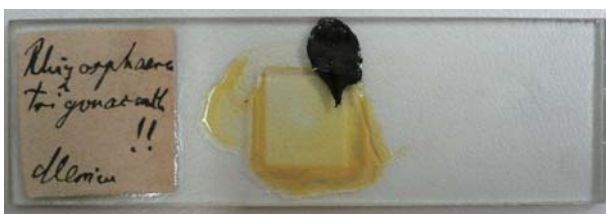


5a



5b

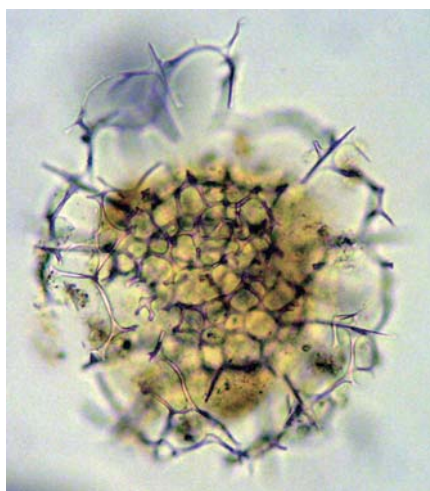
All scales: 100 μ m



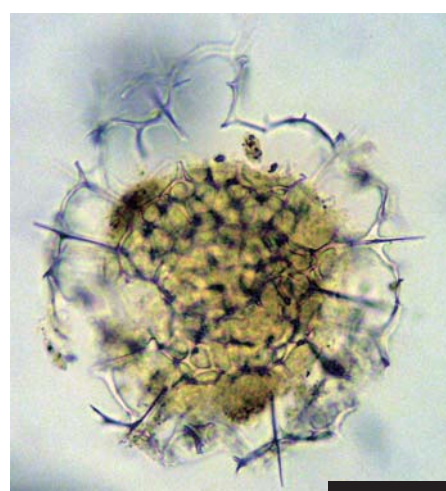
6



7



8a



8b

Plate 15
In “Radiolaria. II: Messina. 1859” box

Figs. 1a-1b. *Collosphaera spinosa* Haeckel 1860

From the handwriting on the slide.

Figs. 2a-2b. *Collosphaera spinosa* Haeckel 1860

From the handwriting on the slide.

Fig. 3. *Collosphaera spinosa* Haeckel 1860

From the handwriting on the slide.

Figs. 4a-4b. *Collosphaera spinosa* Haeckel 1860

From the handwriting on the slide.

Fig. 5. Radiolarian slide with the individual of pl. 15, figs. 1a-4b.

70. R. 4 !!

Collosphaera spinosa Hkl

Messina 1860

Fig. 6. Radiolarian slide with the individual of pl. 15, figs. 7a-7c.

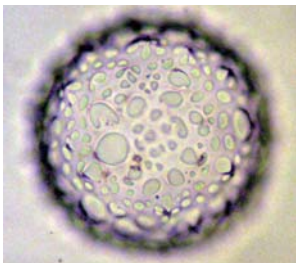
R. 31.

Rhizosphaera trigonacantha

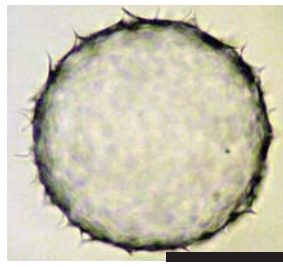
!!

Figs. 7a-7c. *Rhizosphaera trigonacantha* Haeckel

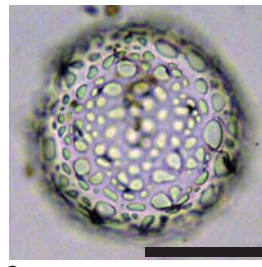
From the handwriting on the slide.



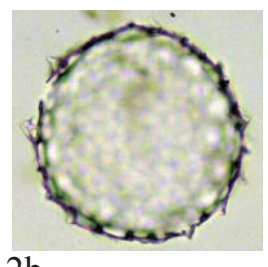
1a



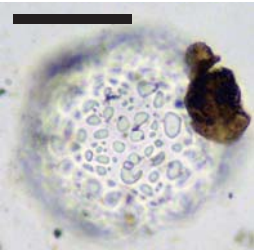
1b



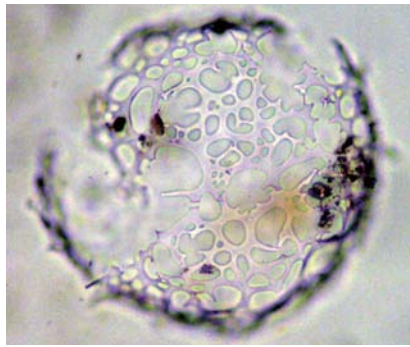
2a



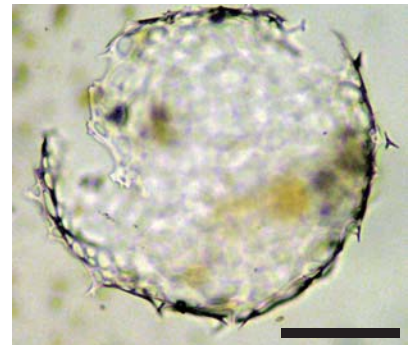
2b



3

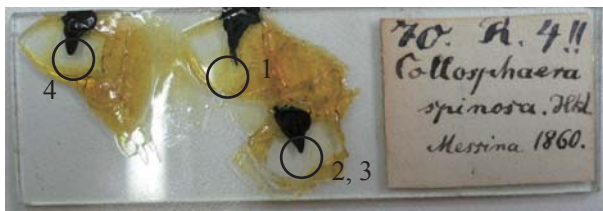


4a

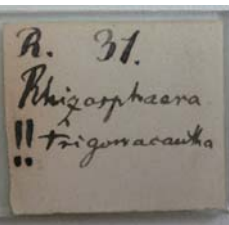


4b

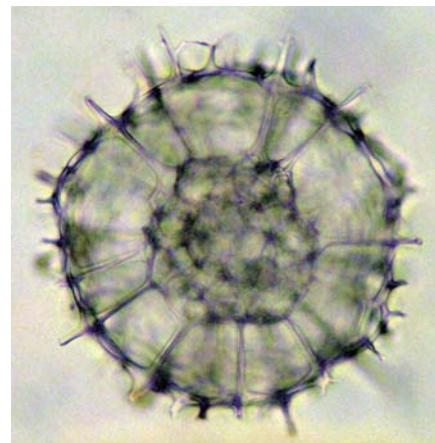
All scales: 100 μ m



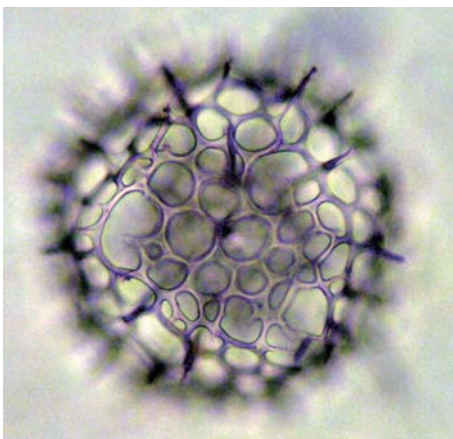
5



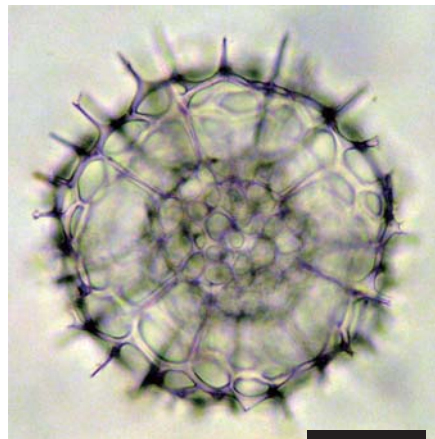
6



7a



7b



7c

70. R. 4!!
Collozaphera
spinosa. Hbd.
Messina 1860.

R. 31.
Rhizozaphera
!! *trigona* Hbd.

Plate 16
In “Radiolaria. II: Messina. 1859” box

Figs. 1a-1b. *Haliomma erinaceus* Haeckel 1860

From the handwriting on the slide.

Figs. 2a-2b. *Haliomma erinaceus* Haeckel 1860

From the handwriting on the slide.

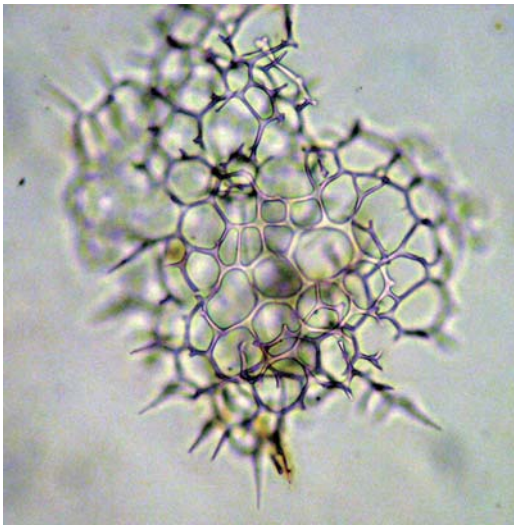
Figs. 3a-3b. *Haliomma erinaceus* Haeckel 1860

From the handwriting on the slide.

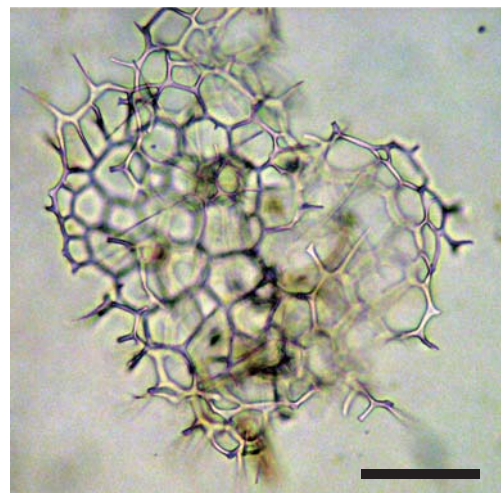
Fig. 4. Radiolarian slide with the individuals of pl. 16, figs. 1a-4b.

R. 72.

Haliomma erinaceus

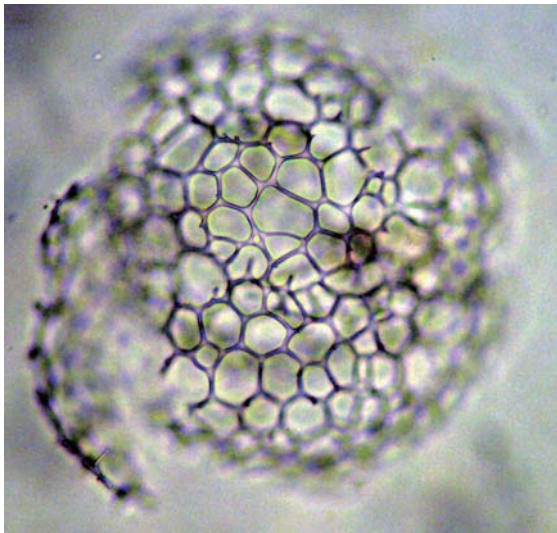


1a

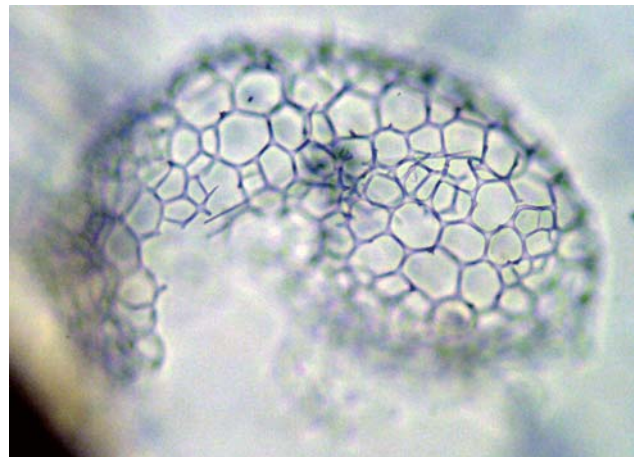


1b

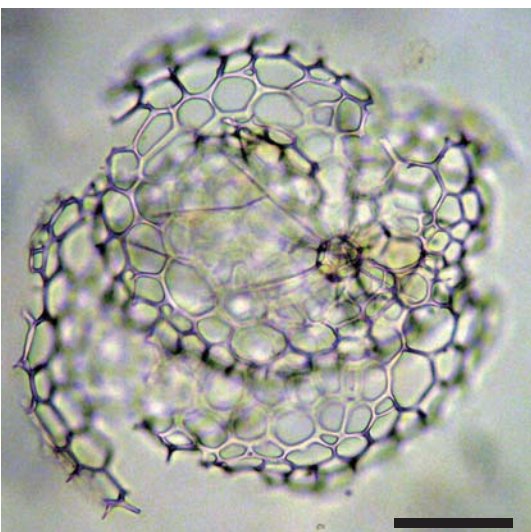
All scales: 100 μ m



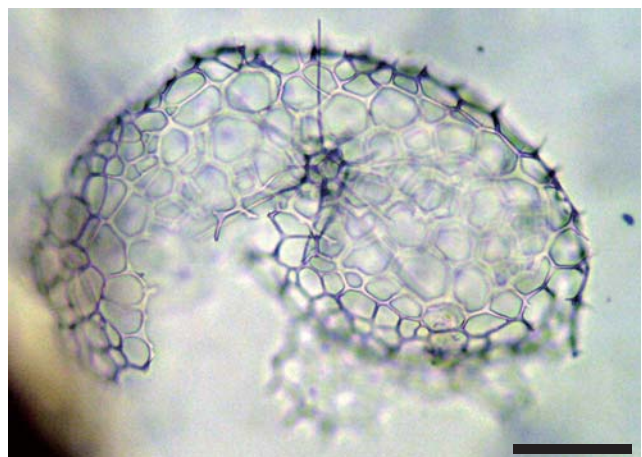
2a



3a



2b



3b



4

R. 72.
Halimma
Erinaceus.

Plate 17
In “Radiolaria. II: Messina. 1859” box

Figs. 1a-1b. *Rhizosphaera trigonacantha* Haeckel 1860

From the handwriting on the slide.

Fig. 2. Radiolarian slide with the individual of pl. 17, figs. 1a-1b.

31. c. R.

Rhizosphaera trigonacantha

(cum capsula centrali)

Fig. 3. Radiolarian slide with the individual of pl. 17, fig. 4.

Rhizosphaera trigonacantha

Fig. 4. *Rhizosphaera trigonacantha* Haeckel 1860

From the handwriting on the slide.

Fig. 5. Radiolarian slide with the individual of pl. 17, figs. 6a-6c.

!

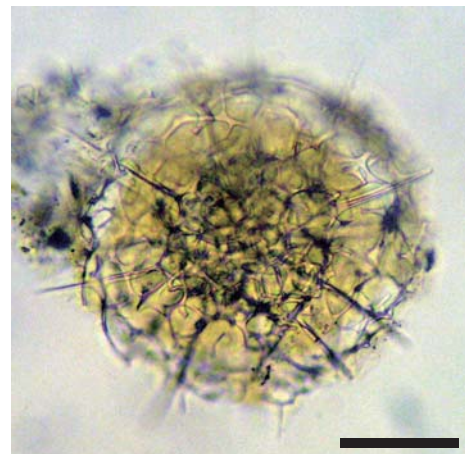
Rhizosphaera trigonacantha

Figs. 6a-6c. *Rhizosphaera trigonacantha* Haeckel 1860

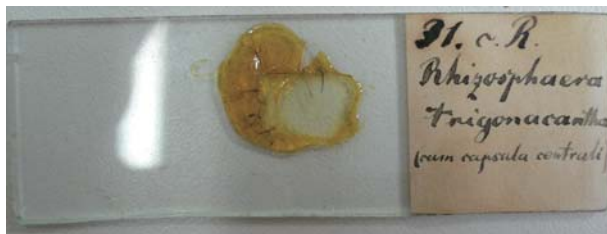
From the handwriting on the slide.



1a



1b



2

Rh. c. R.
Rhizosphaera
trigonacantha
(from capsula centrali)



3

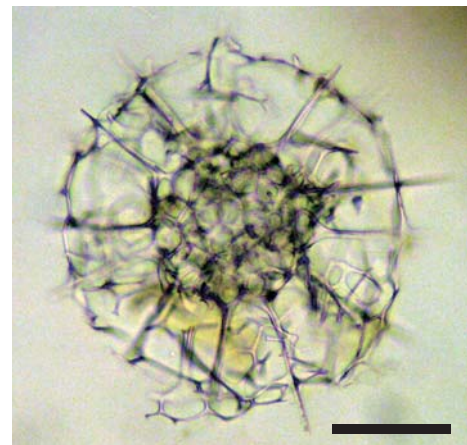
Rhizosphaera
trigonacantha



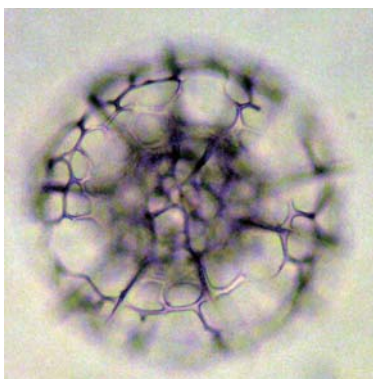
5

Rhizosphaera!
trigonacantha

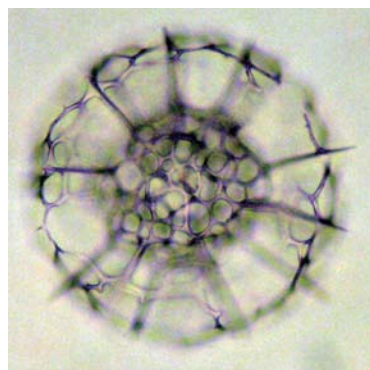
All scales: 100 μ m



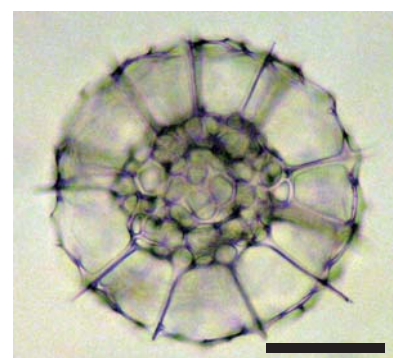
4



6a



6b



6c

Plate 18
In “Radiolaria. II: Messina. 1859” box

Figs. 1a-1b. *Rhizosphaera leptomita* Haeckel 1860

From the handwriting on the slide.

Fig. 2. Radiolarian slide with the individual of pl. 18, figs. 1a-1b.

32. R b.

Rhizosphaera leptomita

Fig. 3. Radiolarian slide with the individual of pl. 18, figs. 4a-4b.

54. R. a!

Euchitonia mülleri

Figs. 4a-4b. *Euchitonia muelleri* Haeckel 1862

From the handwriting on the slide.

Figs. 5a-5b. *Euchitonia virchowii* Haeckel 1862

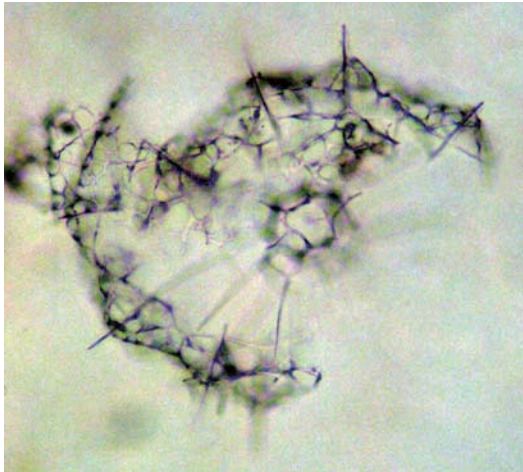
From the handwriting on the slide.

Fig. 6. Radiolarian slide with the individual of pl. 18, figs. 5a-5b.

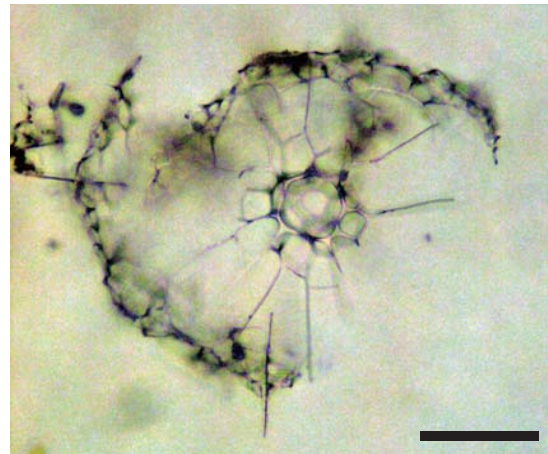
51. j. R.

Euchitonia virchowii

(juvenis)



1a



1b

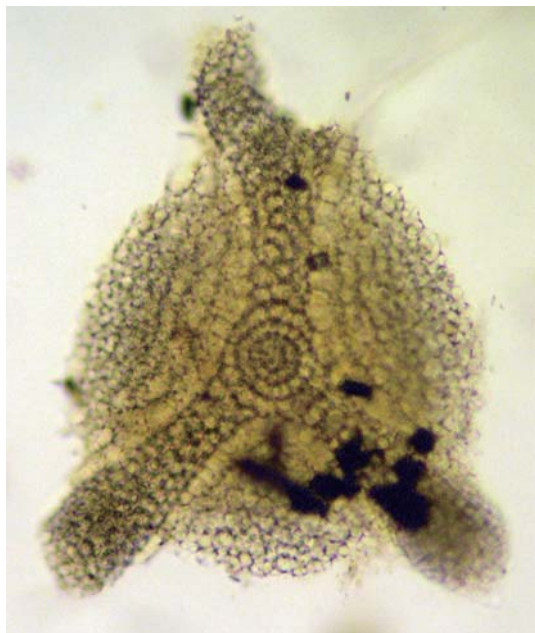
All scales: 100 μ m



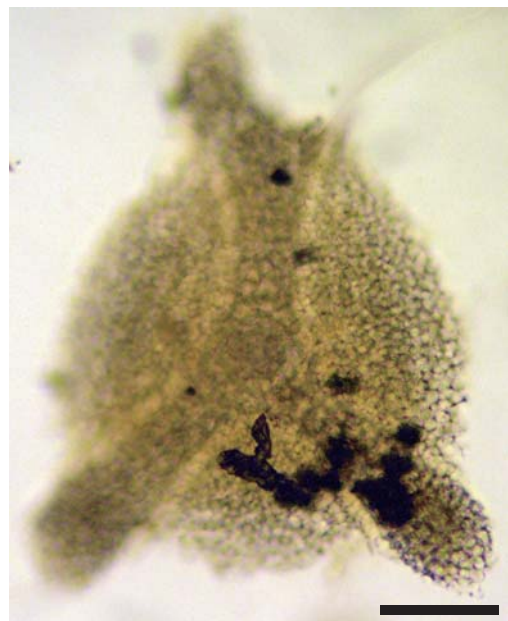
2



3



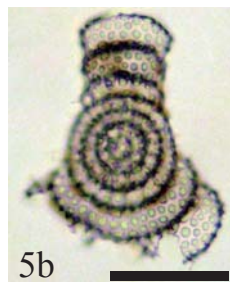
4a



4b



5a



5b



6

Plate 19
In “Radiolaria. II: Messina. 1859” box

Figs. 1a-1c. *Xiphacantha serrata* Haeckel

From the handwriting on the slide.

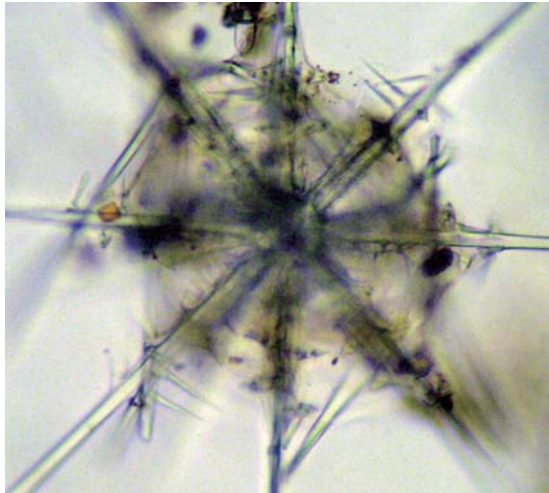
Fig. 2. Radiolarian slide with the individuals of pl. 19, figs. 1a-1b and 3a-3b.

Xiphacantha serrata

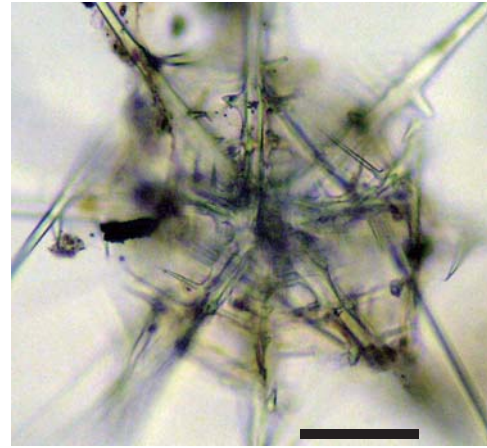
Lanzarote

Figs. 3a-3c. *Xiphacantha serrata* Haeckel

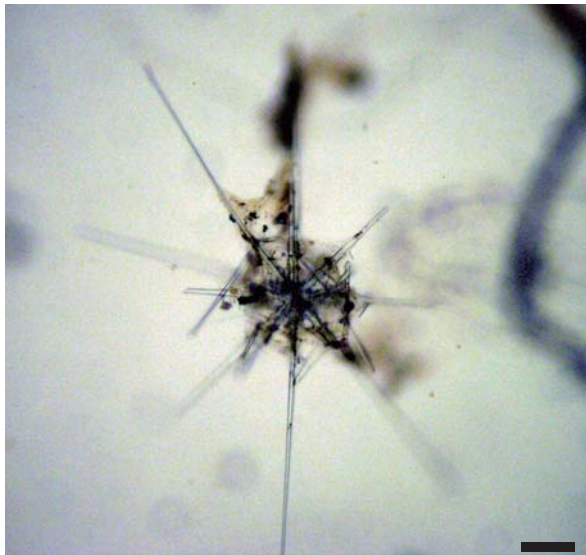
From the handwriting on the slide.



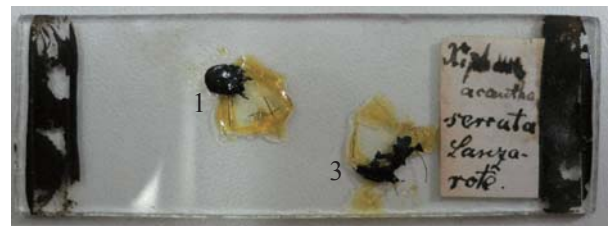
1a



1b



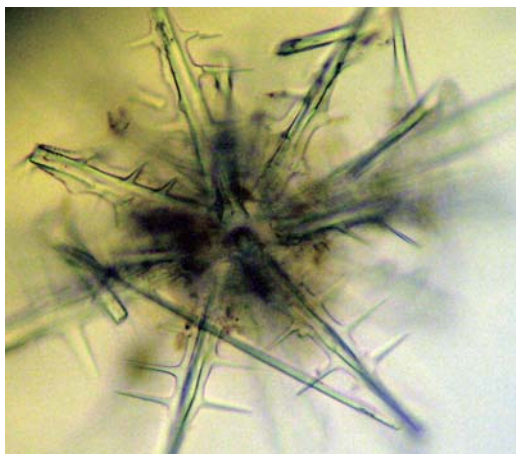
1c



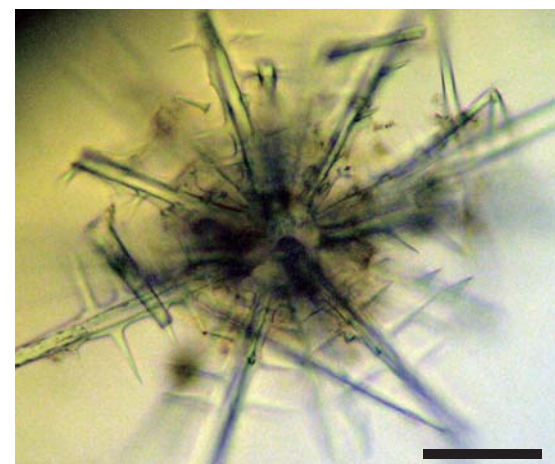
2



3a



3b



3c

All scales: 100 μ m

Plate 20
In “Radiolaria. II: Messina. 1859” box

Fig. 1. *Euchitonia muelleri* Haeckel 1858

From the handwriting on the slide.

Fig. 2. Radiolarian slide with the individual of pl. 20, fig. 1.

!!

Euchitonia mülleri

Fig. 3. Radiolarian slide with the individual of pl. 20, figs. 4a-4b.

Ommatospyris

Lanzarote

Figs. 4a-4b. *Ommatospyris* sp.

From the handwriting on the slide.

Figs. 5a-5b. *Ommatospyris?* sp.

From the handwriting on the slide.

Fig. 6. Radiolarian slide with the individual of pl. 20, figs. 5a-5b.

Ommatospyris?

Figs. 7a-7b. *Rhizosphaera trigonacantha* Haeckel 1860

From the handwriting on the slide.

Fig. 8. Radiolarian slide with the individual of pl. 20, figs. 5a-5b.

Rhizosphaera trigonacantha

diruta

Messina

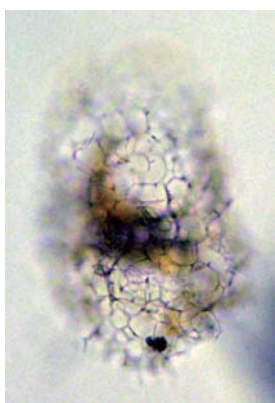


1a

2



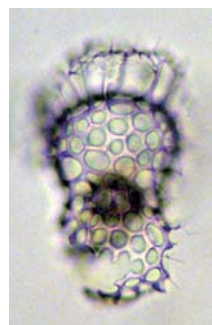
3



4a



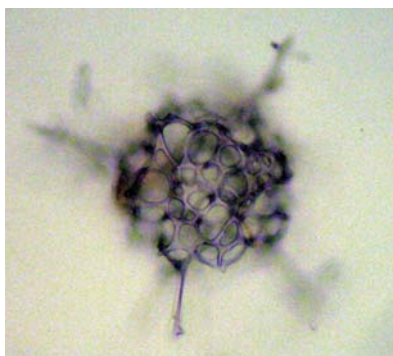
4b



5a



5b

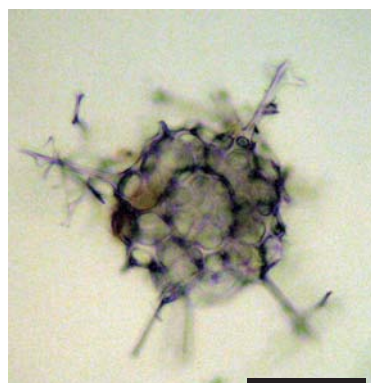


7a

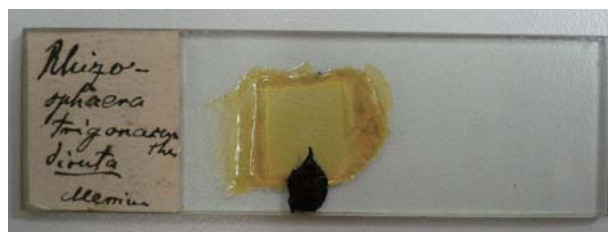


6

All scales: 100 μ m



7b



8

Plate 21
In “Radiolaria. II: Messina. 1859” box

Figs. 1a-1b. *Euchitonia muelleri* Haeckel 1858

From the handwriting on the slide.

Similar to pl. 30, fig. 8 of Haeckel (1862)

Fig. 2. Radiolarian slide with the individual of pl. 21, fig. 2.

54. R. m.

Euchitonia mülleri

!

Figs. 3a-3b. *Haliomma castanea* Haeckel 1860

From the handwriting on the slide.

Fig. 4. Radiolarian slide with the individual of pl. 21, figs. 3a-3b.

30. R.

Haliomma castanea

Fig. 5. *Euchitonia muelleri* Haeckel 1862

From the handwriting on the slide.

Similar to pl. 30, fig. 1 of Haeckel (1862)

Fig. 6. Radiolarian slide with the individual of pl. 21, fig. 5.

54. R. 2.

Euchitonia mülleri

Fig. 7. *Euchitonia muelleri* Haeckel 1862

From the handwriting on the slide.

Similar to pl. 30, fig. 9 of Haeckel (1862)

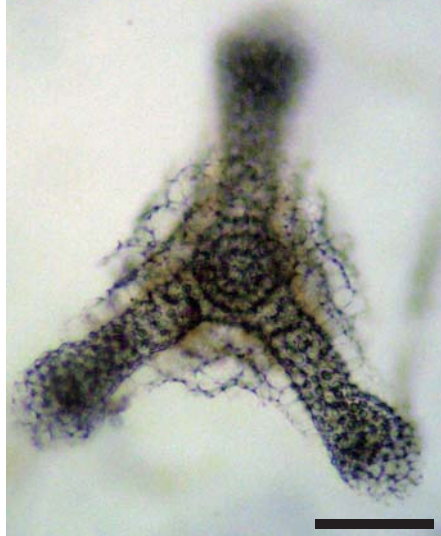
Fig. 8. Radiolarian slide with the individual of pl. 21, fig. 7.

Euchitonia mülleri !

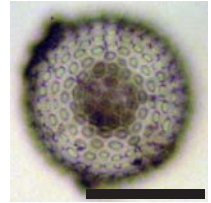
Messina



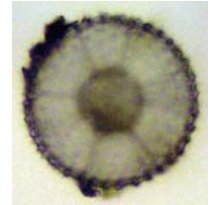
1a



1b

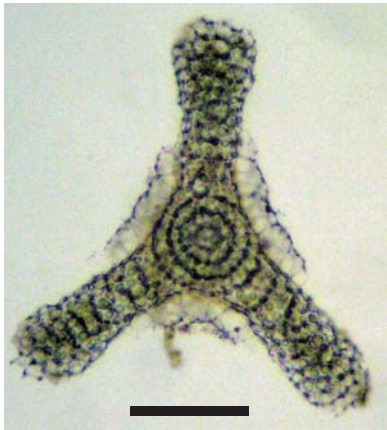


3a



3b

All scales: 100 μ m



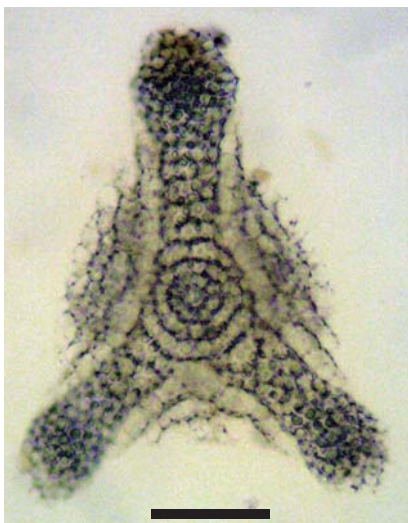
5



2



4



7



6



8

Plate 22
In “Radiolaria. II: Messina. 1859” box

Fig. 1. *Spongosphaera streptacantha* Haeckel

From the handwriting on the slide.

Fig. 2. Radiolarian slide with the individual of pl. 22, fig. 1.

Spongosphaera streptacantha

Messina

Fig. 3. Radiolarian slide with the individual of pl. 22, fig. 4.

Spongosphaera

(diruta)

Messina

Fig. 4. *Spongosphaera* sp.

From the handwriting on the slide.

Fig. 5. Radiolarian slide with the individual of pl. 22, fig. 6.

Sponchelius

Lanzarote

Fig. 6. *Sponchelius* sp. [nomen nudum for genus]

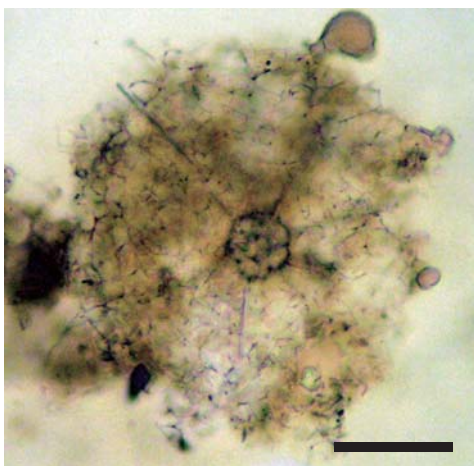
From the handwriting on the slide.

Fig. 7. The box of the Radiolarian slides.

Radiolaria II.

Messina I. 1859.

Ernst Haeckel.



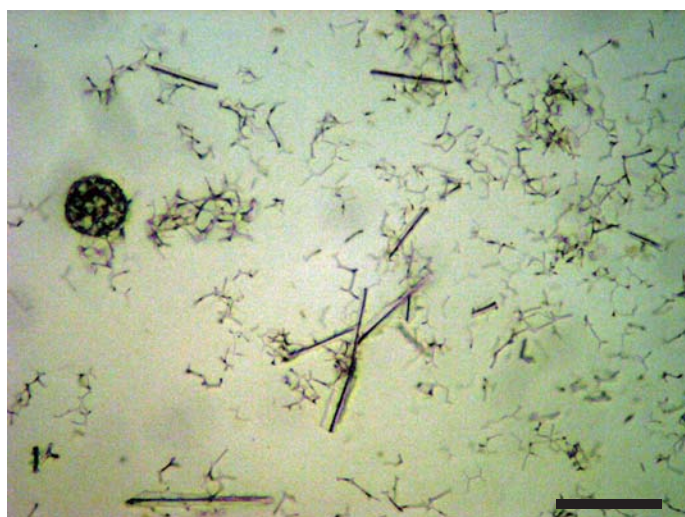
1



2



3

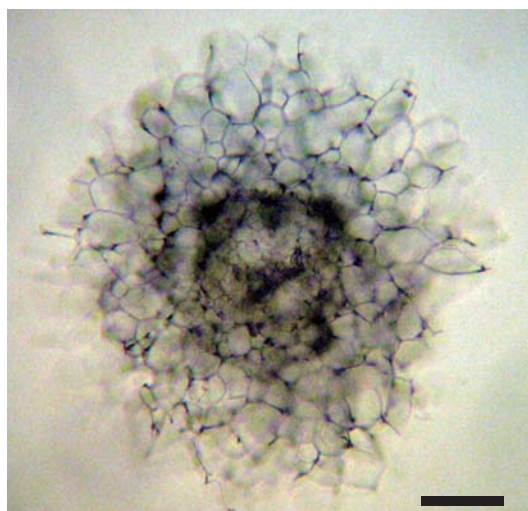


4

All scales: 100 μ m



5



6



7

Plate 23
In “Radiolaria. II: Messina. 1859” box

Figs. 1a-1b. *Stylodictya arachnia* Müller 1858

From the handwriting on the slide.

Fig. 2. Radiolarian slide with the individual of pl. 23, fig. 1.

48. R.

Stylodictya arachnia

! Kaput !

Fig. 3. Radiolarian slide with the individual of pl. 23, figs. 4a-4c.

28. R.

Haliomma capillaceum

!!

Figs. 4a-4c. *Haliomma capillaceum* Haeckel

From the handwriting on the slide.

Fig. 5. The box of the Radiolarian slides.

Radiolaria II.

Messina I. 1859.

Ernst Haeckel.



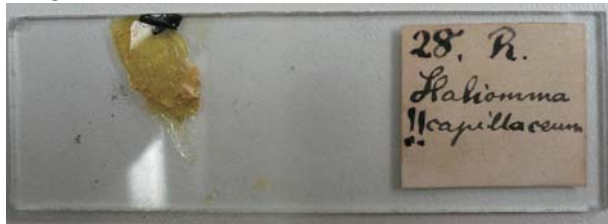
1a



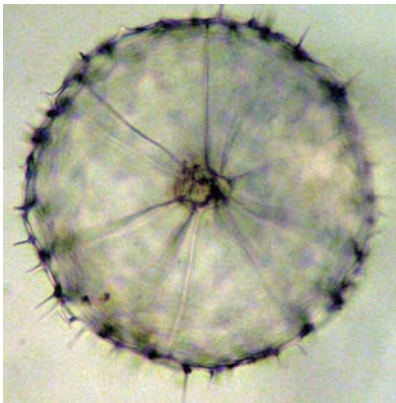
1b



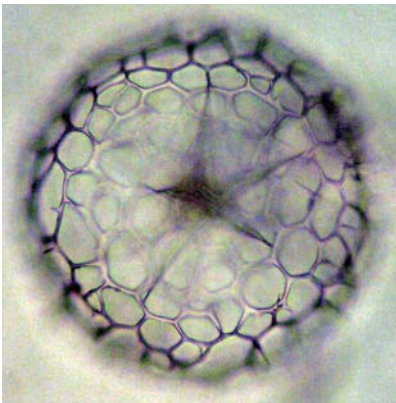
2



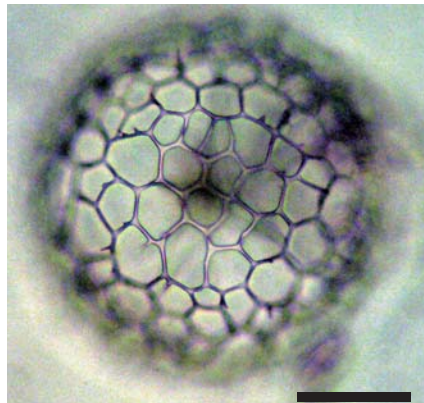
3



4a



4b



4c

All scales:
100 μm



5